



DORNBRACHT YARRE Concealed thermostat with two function volume control



DORNBRACHT  
YARRE

- Chrome

36 426 832    Product version from 1/1/2023



- rotary diverter with volume control and shut-off function
- cover plate Ø 150 mm
- temperature control handle with safety limit stop at 38°C
- hot water temperature limiter, can be preset
- WRAS

	Chrome	36 426 832-00
	Soft Black	36 426 832-69

Required miscellaneous

Concealed thermostat -

35 424 970 90

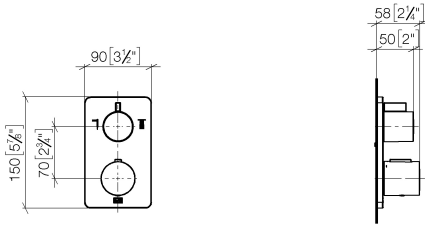




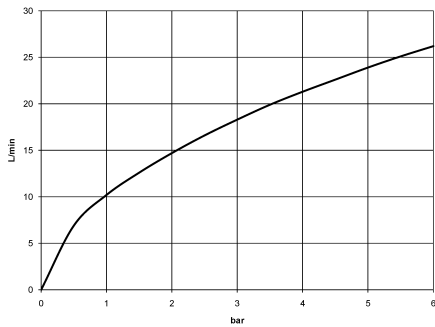
DORNBRACHT YARRE Concealed thermostat with two function volume control  
- Chrome

DORNBRACHT  
YARRE

36 426 832    Product version from 1/1/2023  
mm [inches]



Flow rate chart



Codes & Standards

DIN 4109	ISO 3822	Scottish Water Byelaws	UK Water Supply Regulations
----------	----------	---------------------------	--------------------------------

Ü-Zeichen



DORNBRACHT YARRE Concealed thermostat with two function volume control  
- Chrome

DORNBRACHT  
YARRE

36 426 832    Product version from 1/1/2023

Certificates and sustainability

LGA\_19

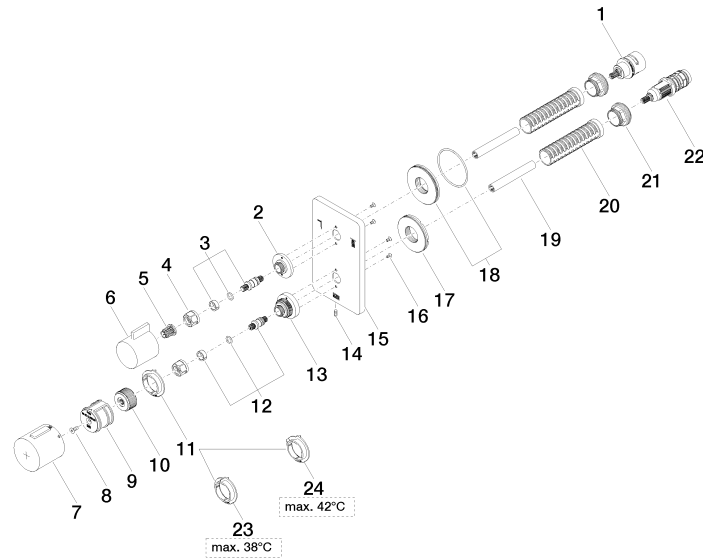
LGA\_19

WRAS\_250402

# DORNBRAUCHT YARRE Concealed thermostat with two function volume control - Chrome

DORNBRAUCHT  
YARRE

36 426 832 Product version from 1/1/2023





# DORNBRAUCH YARRE Concealed thermostat with two function volume control - Chrome

DORNBRAUCH  
YARRE

36 426 832 Product version from 1/1/2023

## Spare parts list

No.	Item Number	Name	Quantity used	Delivery time
22	90 15 02 013 00 90	cartridge	1.00	2
23	09 28 10 188 90	regulator	1.00	2
1	90 90 03 163 00 90	diverter	1.00	2
18	90 30 01 190 00 90	disc	1.00	2
12	04 29 06 024 01-00	spindle	1.00	10
11	09 28 10 187 90	regulator	1.00	2
21	09 24 04 257 90	nut	2.00	2
13	09 12 12 051-00	base	1.00	10
6	09 20 67 006-00	handle	1.00	10
2	09 12 12 053-00	base	1.00	10
17	09 30 01 296 90	disc	1.00	2
16	09 30 30 157 90	screw	4.00	2
5	90 12 12 002 00 90	fixing cap	1.00	2
7	90 17 33 017 00-00	handle	1.00	10
3	04 29 06 111 01-00	spindle	1.00	10
10	09 12 12 054 90	base	1.00	2
24	09 28 10 189 90	regulator	1.00	2
14	09 31 11 134 90	pin	1.00	2
4	90 23 30 023 00 90	nut	2.00	2
20	90 18 40 077 01 90	spindle	2.00	2
8	90 30 30 124 00 90	screw	1.00	2
19	90 23 01 124 00 90	sleeve	2.00	2
9	90 12 12 052 00 90	base	1.00	2
15	09 11 02 353-00	plate	1.00	60