

LULU Concealed thermostat with three function volume control - Chrome

LULU

36 427 710 Product version from 3/13/2017 to 3/21/2019



- rotary diverter with volume control and shut-off function
- cover plate 150 x 90 mm
- temperature control handle with safety limit stop at 38°C
- hot water temperature limiter, can be preset
- WRAS



Chrome

36 427 710-00



Brushed Platinum

36 427 710-06

Required miscellaneous



- Concealed thermostat -**
- max. recess depth 136 mm
 - min. recess depth 80 mm

35 427 970 90

Required miscellaneous



- Concealed thermostat with built-in isolators -**
- max. recess depth 136 mm
 - min. recess depth 80 mm

35 428 970 90

Recommended miscellaneous



- xGRID Attachment set for integrating in the dry wall construction -**

12 340 970 90

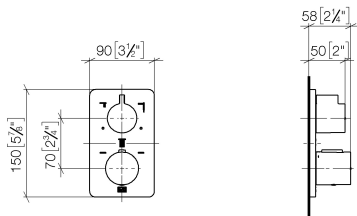
Required miscellaneous



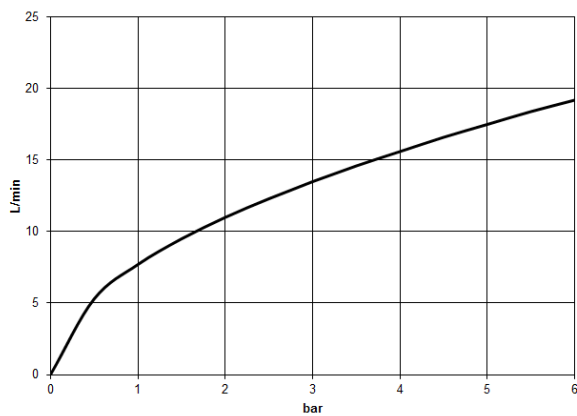
- xGRID Installation track 555 mm -**

12 360 970 90

mm [inches]



Flow rate chart



Codes & Standards

DIN 4109

EN 1111

ISO 3822

Scottish Water
Byelaws

UK Water Supply
Regulations

Ü-Zeichen



LULU Concealed thermostat with three function volume control - Chrome

LULU

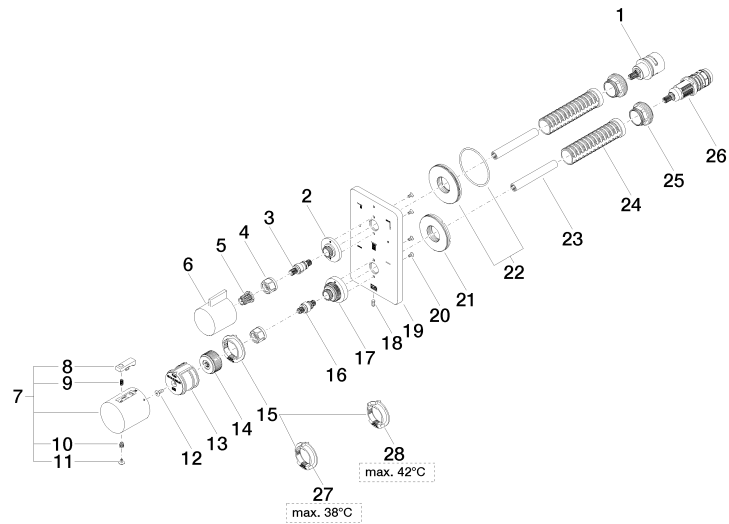
36 427 710 Product version from 3/13/2017 to 3/21/2019

Certificates and sustainability

LGA_29

DVGW_DW-
6512DN0

WRAS_250402



Spare parts list

No.	Item Number	Name	Quantity used	Delivery time
27	09 28 10 150 90	regulator	1.00	60
18	09 31 11 134 90	pin	1.00	2
26	90 15 02 012 00 90	cartridge	1.00	60
17	09 12 12 051-00	base	1.00	10
19	09 11 02 315-00	plate	1.00	10
20	09 30 30 157 90	screw	4.00	2
15	09 28 10 143 90	regulator	1.00	60
6	09 20 67 006-00	handle	1.00	10
21	09 30 01 296 90	disc	1.00	2
14	09 12 12 054 90	base	1.00	2
28	09 28 10 151 90	regulator	1.00	60
22	90 30 01 190 00 90	disc	1.00	2
5	90 12 12 002 00 90	fixing cap	1.00	2
7	90 17 33 004 00-00	handle	1.00	10
1	90 90 03 170 00 90	diverter	1.00	2
2	09 12 12 053-00	base	1.00	10
9	90 16 02 027 00 90	spring	1.00	2
25	09 24 04 257 90	nut	2.00	2
13	90 12 12 052 00 90	base	1.00	2
10	90 30 30 136 00 90	screw	1.00	2
16	04 29 06 024 01-00	spindle	1.00	10
4	90 23 30 023 00 90	nut	2.00	2
12	90 30 30 124 00 90	screw	1.00	2
3	04 29 06 111 01-00	spindle	1.00	10
11	90 31 20 049 00-00	plug	1.00	10
24	90 18 40 077 01 90	spindle	2.00	2
23	90 23 01 124 00 90	sleeve	2.00	2
8	90 21 33 011 00-13	handle	1.00	2