

## Concealed thermostat with three function volume control - Chrome

SERIES SPECIFIC

36 427 970 Product version from 3/13/2017 to 3/21/2019



- rotary diverter with volume control and shut-off function
- cover plate Ø 150 mm
- temperature control handle with safety limit stop at 38°C
- hot water temperature limiter, can be preset
- WRAS

|  |                                |               |
|--|--------------------------------|---------------|
|  | Chrome                         | 36 427 970-00 |
|  | Brushed Platinum               | 36 427 970-06 |
|  | Platinum                       | 36 427 970-08 |
|  | Dark Chrome                    | 36 427 970-19 |
|  | Light Gold                     | 36 427 970-26 |
|  | Brushed Light Gold             | 36 427 970-27 |
|  | Brushed Durabronze (23kt Gold) | 36 427 970-28 |
|  | Matte Black                    | 36 427 970-33 |
|  | Brushed Dark Brass             | 36 427 970-39 |
|  | Brushed Bronze                 | 36 427 970-42 |
|  | Brushed Champagne (22kt Gold)  | 36 427 970-46 |
|  | Champagne (22kt Gold)          | 36 427 970-47 |
|  | Brushed Chrome                 | 36 427 970-93 |
|  | Brushed Dark Platinum          | 36 427 970-99 |

### Required miscellaneous



- Concealed thermostat -** 35 427 970 90
- max. recess depth 136 mm
  - min. recess depth 80 mm

### Recommended miscellaneous



- xGRID Attachment set for integrating in the dry wall construction -** 12 340 970 90

### Required miscellaneous



- Concealed thermostat with built-in isolators -** 35 428 970 90
- max. recess depth 136 mm
  - min. recess depth 80 mm

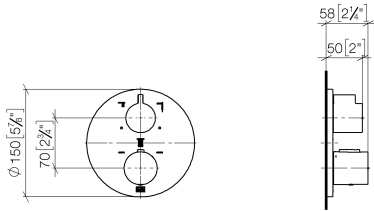
### Required miscellaneous



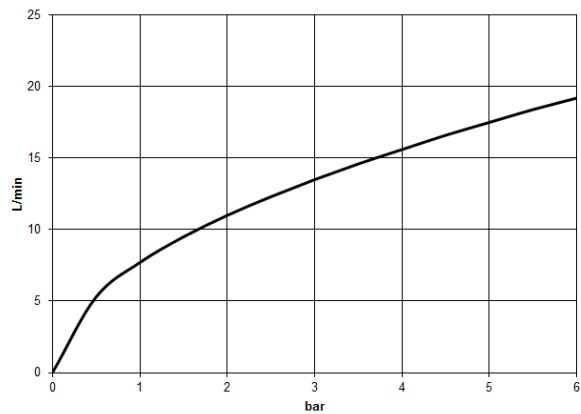
- xGRID Installation track 555 mm -** 12 360 970 90

36 427 970 Product version from 3/13/2017 to 3/21/2019

mm [inches]



Flow rate chart



### Codes & Standards

DIN 4109

EN 1111

ISO 3822

Scottish Water  
Byelaws

UK Water Supply  
Regulations

Ü-Zeichen



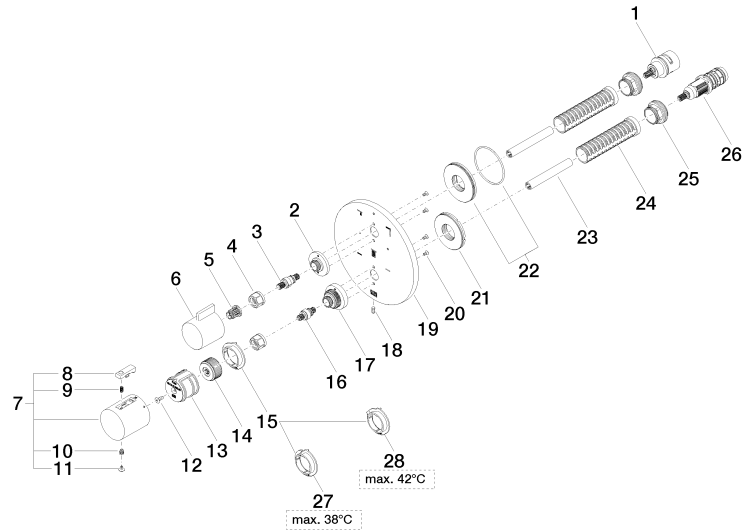
Concealed thermostat with three function volume control - Chrome

SERIES SPECIFIC

36 427 970 Product version from 3/13/2017 to 3/21/2019

Certificates and sustainability

|        |                     |             |
|--------|---------------------|-------------|
| LGA_29 | DVGW_DW-<br>6512DN0 | WRAS_250402 |
|--------|---------------------|-------------|



### Spare parts list

| No. | Item Number        | Name       | Quantity used | Delivery time |
|-----|--------------------|------------|---------------|---------------|
| 17  | 09 12 12 051-00    | base       | 1.00          | 10            |
| 27  | 09 28 10 188 90    | regulator  | 1.00          | 2             |
| 28  | 09 28 10 189 90    | regulator  | 1.00          | 2             |
| 7   | 90 17 33 004 00-00 | handle     | 1.00          | 10            |
| 5   | 90 12 12 002 00 90 | fixing cap | 1.00          | 2             |
| 18  | 09 31 11 134 90    | pin        | 1.00          | 2             |
| 20  | 09 30 30 157 90    | screw      | 4.00          | 2             |
| 14  | 09 12 12 054 90    | base       | 1.00          | 2             |
| 26  | 90 15 02 013 00 90 | cartridge  | 1.00          | 2             |
| 21  | 09 30 01 296 90    | disc       | 1.00          | 2             |
| 15  | 09 28 10 187 90    | regulator  | 1.00          | 2             |
| 9   | 90 16 02 027 00 90 | spring     | 1.00          | 2             |
| 2   | 09 12 12 053-00    | base       | 1.00          | 10            |
| 6   | 09 20 67 006-00    | handle     | 1.00          | 10            |
| 19  | 09 11 02 269-00    | plate      | 1.00          | 10            |
| 1   | 90 90 03 170 00 90 | diverter   | 1.00          | 2             |
| 25  | 09 24 04 257 90    | nut        | 2.00          | 2             |
| 22  | 90 30 01 190 00 90 | disc       | 1.00          | 2             |
| 13  | 90 12 12 052 00 90 | base       | 1.00          | 2             |
| 10  | 90 30 30 136 00 90 | screw      | 1.00          | 2             |
| 3   | 04 29 06 111 01-00 | spindle    | 1.00          | 10            |
| 4   | 90 23 30 023 00 90 | nut        | 2.00          | 2             |
| 16  | 04 29 06 024 01-00 | spindle    | 1.00          | 10            |
| 23  | 90 23 01 124 00 90 | sleeve     | 2.00          | 2             |
| 24  | 90 18 40 077 01 90 | spindle    | 2.00          | 2             |
| 12  | 90 30 30 124 00 90 | screw      | 1.00          | 2             |
| 11  | 90 31 20 049 00-00 | plug       | 1.00          | 10            |
| 8   | 90 21 33 011 00-13 | handle     | 1.00          | 2             |