

## Concealed thermostat with three function volume control - Platinum

SERIES SPECIFIC

36 427 970 Product version from 3/13/2017 to 3/21/2019



- rotary diverter with volume control and shut-off function
- cover plate Ø 150 mm
- temperature control handle with safety limit stop at 38°C
- hot water temperature limiter, can be preset
- WRAS

	Platinum	36 427 970-08
	Chrome	36 427 970-00
	Brushed Platinum	36 427 970-06
	Dark Chrome	36 427 970-19
	Light Gold	36 427 970-26
	Brushed Light Gold	36 427 970-27
	Brushed Durabronze (23kt Gold)	36 427 970-28
	Matte Black	36 427 970-33
	Brushed Bronze	36 427 970-42
	Brushed Champagne (22kt Gold)	36 427 970-46
	Champagne (22kt Gold)	36 427 970-47
	Brushed Chrome	36 427 970-93
	Brushed Dark Platinum	36 427 970-99

### Required miscellaneous



- Concealed thermostat -** 35 427 970 90
- max. recess depth 136 mm
  - min. recess depth 80 mm

### Recommended miscellaneous



- xGRID Attachment set for integrating in the dry wall construction -** 12 340 970 90

### Required miscellaneous



- Concealed thermostat with built-in isolators -** 35 428 970 90
- max. recess depth 136 mm
  - min. recess depth 80 mm

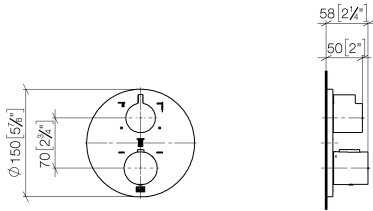
### Required miscellaneous



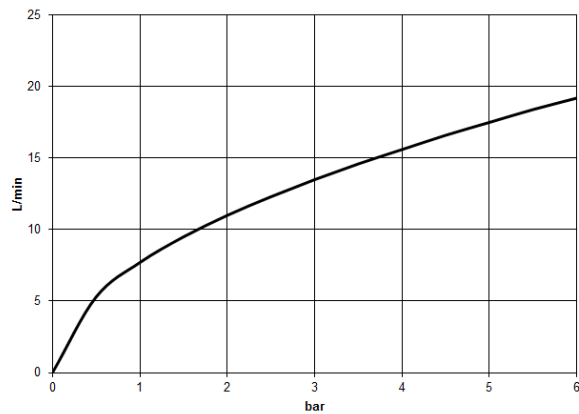
- xGRID Installation track 555 mm -** 12 360 970 90

36 427 970 Product version from 3/13/2017 to 3/21/2019

mm [inches]



**Flow rate chart**



**Codes & Standards**

DIN 4109

EN 1111

ISO 3822

Scottish Water  
Byelaws

UK Water Supply  
Regulations

Ü-Zeichen



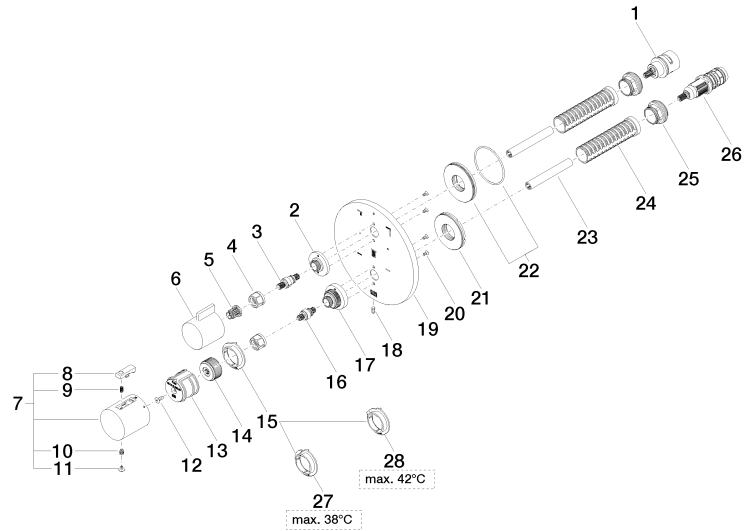
Concealed thermostat with three function volume control - Platinum

SERIES SPECIFIC

36 427 970 Product version from 3/13/2017 to 3/21/2019

Certificates and sustainability

LGA_29	DVGW_DW- 6512DN0	WRAS_250402
--------	---------------------	-------------





## Concealed thermostat with three function volume control - Platinum

SERIES SPECIFIC

36 427 970 Product version from 3/13/2017 to 3/21/2019

### Spare parts list

No.	Item Number	Name	Quantity used	Delivery time
1	90 90 03 170 00 90	diverter	1.00	2
9	90 16 02 027 00 90	spring	1.00	2
27	09 28 10 188 90	regulator	1.00	2
17	09 12 12 051-08	base	1.00	40
20	09 30 30 157 90	screw	4.00	2
28	09 28 10 189 90	regulator	1.00	2
21	09 30 01 296 90	disc	1.00	2
5	90 12 12 002 00 90	fixing cap	1.00	2
18	09 31 11 134 90	pin	1.00	2
19	09 11 02 269-08	plate	1.00	40
25	09 24 04 257 90	nut	2.00	2
6	09 20 67 006-08	handle	1.00	40
15	09 28 10 187 90	regulator	1.00	2
2	09 12 12 053-08	base	1.00	40
26	90 15 02 013 00 90	cartridge	1.00	2
22	90 30 01 190 00 90	disc	1.00	2
14	09 12 12 054 90	base	1.00	2
7	90 17 33 004 00-08	handle	1.00	40
16	04 29 06 024 01-00	spindle	1.00	10
3	04 29 06 111 01-00	spindle	1.00	10
4	90 23 30 023 00 90	nut	2.00	2
10	90 30 30 136 00 90	screw	1.00	2
11	90 31 20 049 00-13	plug	1.00	30
23	90 23 01 124 00 90	sleeve	2.00	2
13	90 12 12 052 00 90	base	1.00	2
24	90 18 40 077 01 90	spindle	2.00	2
12	90 30 30 124 00 90	screw	1.00	2
8	90 21 33 011 00-13	handle	1.00	2