

xTOOL Concealed thermostat without volume control 1/2" - Platinum

SERIES SPECIFIC

36 501 780

Product version up to 2/2/2021



- cover plate 120 x 120 mm
- temperature control handle with safety limit stop at 38°C
- thermostat cartridge
- WRAS

|   |                               |               |
|---|-------------------------------|---------------|
|  | Platinum                      | 36 501 780-08 |
|  | Chrome                        | 36 501 780-00 |
|  | Brushed Platinum              | 36 501 780-06 |
|  | Dark Chrome                   | 36 501 780-19 |
|  | Brushed Light Gold            | 36 501 780-27 |
|  | Brushed Durabrass (23kt Gold) | 36 501 780-28 |
|  | Matte Black                   | 36 501 780-33 |
|  | Brushed Chrome                | 36 501 780-93 |
|  | Brushed Dark Platinum         | 36 501 780-99 |

Required miscellaneous



xTOOL Concealed thermostat module without volume control -

•max. recess depth 155 mm

•min. recess depth 115 mm

35 503 970 90

Required miscellaneous



xGRID Installation track 555 mm -

12 360 970 90

Recommended miscellaneous

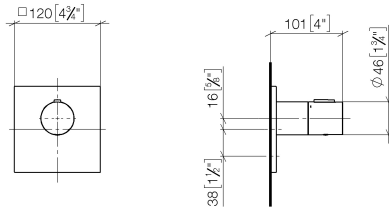


xGRID Attachment set for integrating in the dry wall construction -

12 340 970 90

36 501 780 Product version up to 2/2/2021

mm [inches]



### Flow rate chart



### Codes & Standards

DIN 4109

EN 1111

ISO 3822

Scottish Water  
Byelaws

UK Water Supply  
Regulations

Ü-Zeichen



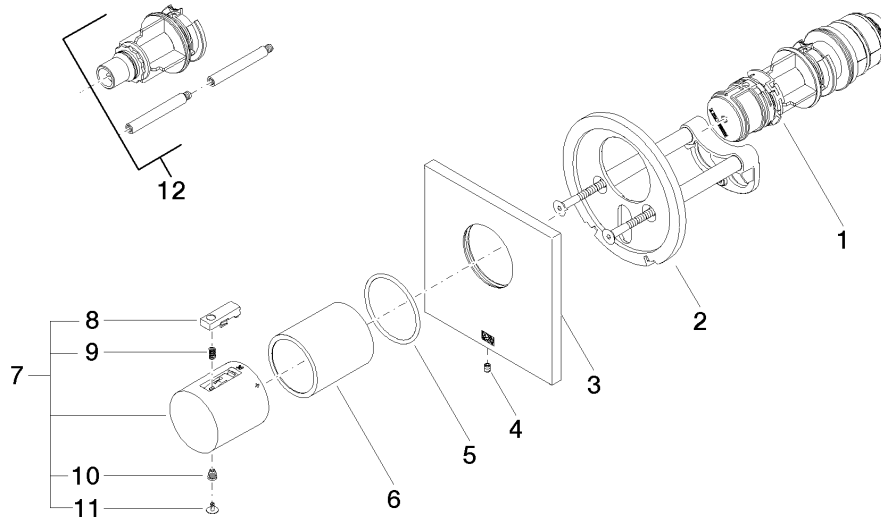
xTOOL Concealed thermostat without volume control 1/2" - Platinum

SERIES SPECIFIC

36 501 780 Product version up to 2/2/2021

Certificates and sustainability

|           |                 |        |        |
|-----------|-----------------|--------|--------|
| WRAS_2011 | DVGW_DW-6512DN0 | LGA_29 | LGA_29 |
|-----------|-----------------|--------|--------|



## Spare parts list

| No. | Item Number        | Name              | Quantity used | Delivery time |
|-----|--------------------|-------------------|---------------|---------------|
| 4   | 09 31 11 044 90    | pin               | 1.00          | 2             |
| 9   | 90 16 02 027 00 90 | spring            | 1.00          | 2             |
| 7   | 90 17 33 004 00-08 | handle            | 1.00          | 40            |
| 12  | 12 178 970 90      | Extension 46 mm - | 1.00          | 2             |
| 2   | 90 11 01 196 00 90 | base              | 1.00          | 2             |
| 6   | 90 21 02 112 00-08 | sleeve            | 1.00          | 40            |
| 3   | 90 11 02 533 00-08 | cover             | 1.00          | 40            |
| 11  | 90 31 20 049 00-13 | plug              | 1.00          | 30            |
| 5   | 90 14 10 049 00 90 | seal              | 1.00          | 2             |
| 10  | 90 30 30 136 00 90 | screw             | 1.00          | 2             |
| 8   | 90 21 33 011 00-13 | handle            | 1.00          | 2             |
| 1   | 90 15 02 065 00 90 | cartridge         | 1.00          | 2             |