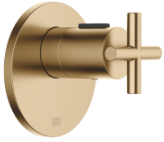


TARA xTOOL Concealed thermostat without volume control 1/2" - Brushed Dark Brass

TARA

36 501 892 Product version from 5/1/2022



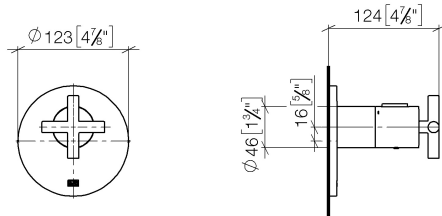
- cover plate Ø 123 mm
- temperature control handle with safety limit stop at 38°C
- thermostat cartridge
- WRAS

	Brushed Dark Brass	36 501 892-39
	Chrome	36 501 892-00
	Brushed Platinum	36 501 892-06
	Platinum	36 501 892-08
	Dark Chrome	36 501 892-19
	Brushed Durabronze (23kt Gold)	36 501 892-28
	Matte Black	36 501 892-33
	Brushed Bronze	36 501 892-42
	Brushed Champagne (22kt Gold)	36 501 892-46
	Champagne (22kt Gold)	36 501 892-47
	Brushed Chrome	36 501 892-93
	Brushed Dark Platinum	36 501 892-99

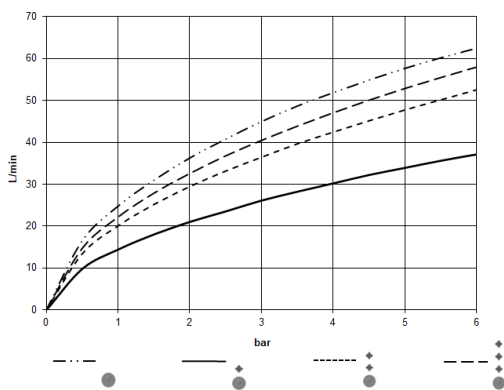
TARA xTOOL Concealed thermostat without volume control 1/2" - Brushed Dark Brass

TARA

36 501 892 Product version from 5/1/2022
mm [inches]



Flow rate chart



Codes & Standards

DIN 4109

ISO 3822

Scottish Water
Byelaws

UK Water Supply
Regulations

Ü-Zeichen



TARA xTOOL Concealed thermostat without volume control 1/2" - Brushed
Dark Brass

TARA

36 501 892 Product version from 5/1/2022

Certificates and sustainability

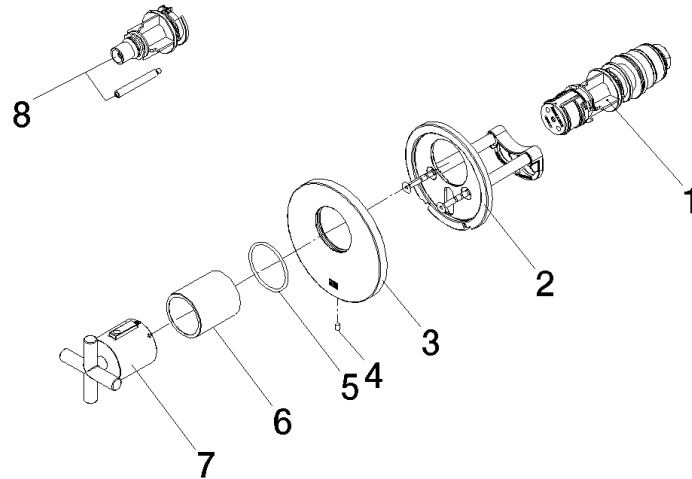
WRAS_2011	LGA_29	LGA_29	LGA_29
-----------	--------	--------	--------

TARA xTOOL Concealed thermostat without volume control 1/2" - Brushed Dark Brass

TARA

36 501 892 Product version from 5/1/2022

Parts for other
finishes can be found
here: [Chrome](#)



Spare parts list

No.	Item Number	Name	Quantity used	Delivery time
7	90 17 33 027 00-39	handle	1.00	30
2	90 11 01 196 00 90	base	1.00	2
6	90 21 02 112 00-39	sleeve	1.00	30
8	12 178 970 90	Extension 46 mm -	1.00	2
4	09 31 11 048 90	pin	1.00	2
1	90 15 02 065 00 90	cartridge	1.00	2
5	90 14 10 049 00 90	seal	1.00	2
3	09 11 02 537-39	cover	1.00	60