

## xTOOL Concealed thermostat without volume control 1/2" - Chrome

SERIES SPECIFIC

36 501 979 Product version up to 2/2/2021



- cover plate Ø 124 mm
- temperature control handle with safety limit stop at 38°C
- thermostat cartridge
- WRAS

	Chrome	36 501 979-00
	Brushed Platinum	36 501 979-06
	Platinum	36 501 979-08
	Durabronze (23kt Gold)	36 501 979-09
	Dark Chrome	36 501 979-19
	Light Gold	36 501 979-26
	Brushed Light Gold	36 501 979-27
	Brushed Durabronze (23kt Gold)	36 501 979-28
	Matte Black	36 501 979-33
	Brushed Bronze	36 501 979-42
	Brushed Champagne (22kt Gold)	36 501 979-46
	Champagne (22kt Gold)	36 501 979-47
	Brushed Chrome	36 501 979-93
	Brushed Dark Platinum	36 501 979-99

### Required miscellaneous



**xTOOL Concealed thermostat module without volume control -** 35 503 970 90  
 • max. recess depth 110 mm  
 • min. recess depth 85 mm

### Recommended miscellaneous



**xGRID Attachment set for integrating in the dry wall construction -** 12 340 970 90

### Required miscellaneous



**xGRID Installation track 555 mm -** 12 360 970 90

36 501 979 Product version up to 2/2/2021

mm [inches]



### Flow rate chart



### Codes & Standards

DIN 4109

EN 1111

ISO 3822

Scottish Water  
Byelaws

UK Water Supply  
Regulations

Ü-Zeichen



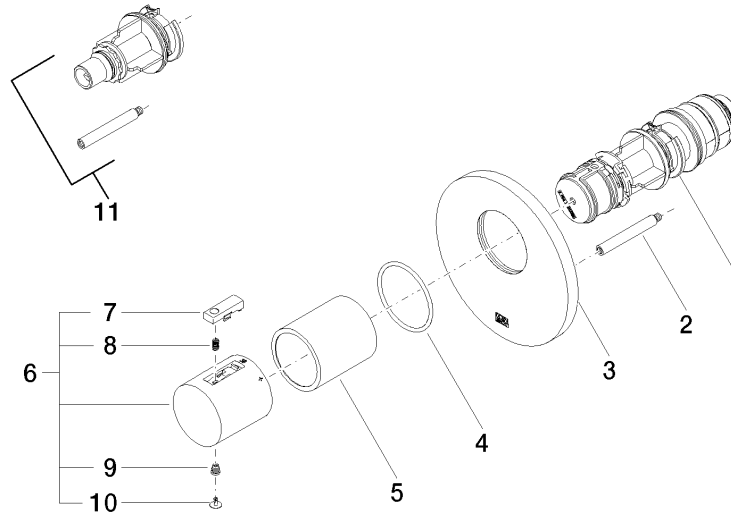
xTOOL Concealed thermostat without volume control 1/2" - Chrome

SERIES SPECIFIC

36 501 979 Product version up to 2/2/2021

Certificates and sustainability

WRAS_2011	DVGW_DW-6512DN0	LGA_29	LGA_29
-----------	-----------------	--------	--------



## Spare parts list

No.	Item Number	Name	Quantity used	Delivery time
	3 09 11 02 162-00	cover	1.00	60
	8 90 16 02 027 00 90	spring	1.00	2
	6 90 17 33 004 00-00	handle	1.00	10
	11 12 178 970 90	Extension 46 mm -	1.00	2
	2 90 31 09 095 00 90	bar	1.00	2
	10 90 31 20 049 00-00	plug	1.00	10
	9 90 30 30 136 00 90	screw	1.00	2
	5 90 21 02 112 00-00	sleeve	1.00	10
	4 90 14 10 049 00 90	seal	1.00	2
	7 90 21 33 011 00-13	handle	1.00	2
	1 90 15 02 065 00 90	cartridge	1.00	2