

LULU xTOOL Concealed thermostat without volume control 3/4" - Chrome



LULU

36 503 710


Product version up to 5/11/2021




- cover plate 120 x 120 mm
- temperature control handle with safety limit stop at 38°C
- thermostat cartridge
- WRAS

	Chrome	36 503 710-00
	Brushed Platinum	36 503 710-06


Required miscellaneous

	xTOOL Concealed thermostat module without volume control - •max. recess depth 110 mm •min. recess depth 85 mm	35 503 970 90
---	--	---------------

Required miscellaneous

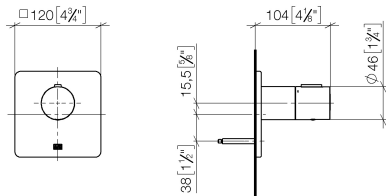
	xGRID Installation track 555 mm -	12 360 970 90
--	--	---------------

Recommended miscellaneous

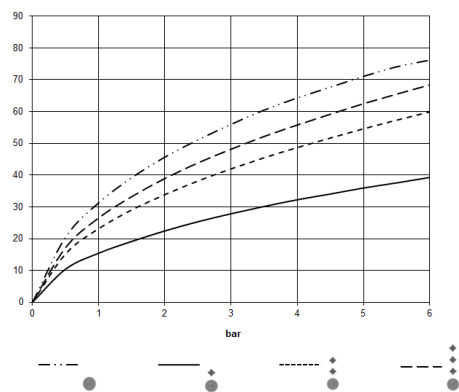
	xGRID Attachment set for integrating in the dry wall construction -	12 340 970 90
---	--	---------------

36 503 710 Product version up to 5/11/2021

mm [inches]



Flow rate chart



Codes & Standards

DIN 4109

EN 1111

ISO 3822

Scottish Water
Byelaws

UK Water Supply
Regulations

Ü-Zeichen



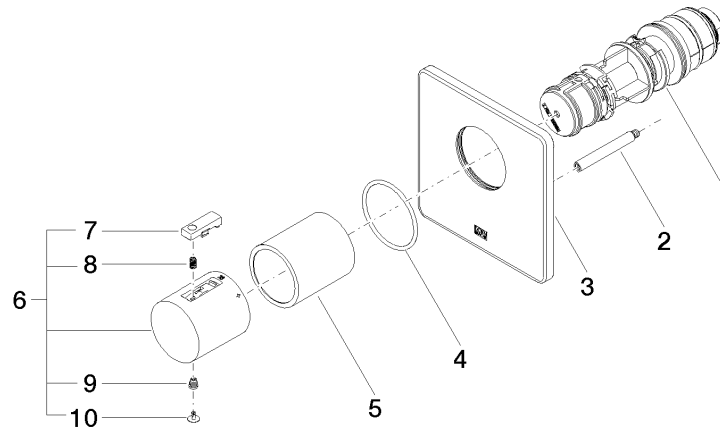
LULU xTOOL Concealed thermostat without volume control 3/4" - Chrome

LULU

36 503 710 Product version up to 5/11/2021

Certificates and sustainability

WRAS_2011	LGA_29	DVGW_DW-6512DN0	LGA_29	LGA_29
-----------	--------	-----------------	--------	--------



Spare parts list

No.	Item Number	Name	Quantity used	Delivery time
3	09 11 02 329-00	plate	1.00	10
6	90 17 33 004 00-00	handle	1.00	10
8	90 16 02 027 00 90	spring	1.00	2
2	90 31 09 095 00 90	bar	1.00	2
4	90 14 10 049 00 90	seal	1.00	2
10	90 31 20 049 00-00	plug	1.00	10
9	90 30 30 136 00 90	screw	1.00	2
5	90 21 02 112 00-00	sleeve	1.00	10
7	90 21 33 011 00-13	handle	1.00	2
1	90 15 02 063 00 90	cartridge	1.00	2