

LULU xTOOL Concealed thermostat without volume control 3/4" - Brushed Platinum

LULU

36 503 710	Product version up to 5/11/2021		
	<ul style="list-style-type: none"> <li>cover plate 120 x 120 mm</li> <li>temperature control handle with safety limit stop at 38°C</li> <li>thermostat cartridge</li> <li>WRAS</li> </ul>	<div> <div></div> <div>Brushed Platinum</div> </div>	36 503 710-06
		<div> <div></div> <div>Chrome</div> </div>	36 503 710-00



Required miscellaneous

	<b>xTOOL Concealed thermostat module without volume control -</b> <ul style="list-style-type: none"> <li>max. recess depth 110 mm</li> <li>min. recess depth 85 mm</li> </ul>	35 503 970 90
--	--	---------------

Required miscellaneous

	<b>xGRID Installation track 555 mm -</b>	12 360 970 90
--	--	---------------

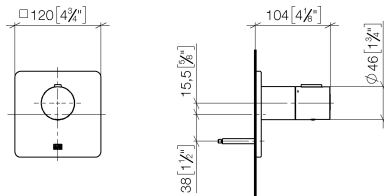
Recommended miscellaneous

	<b>xGRID Attachment set for integrating in the dry wall construction -</b>	12 340 970 90
--	--	---------------

# LULU xTOOL Concealed thermostat without volume control 3/4" - Brushed Platinum

LULU

36 503 710 Product version up to 5/11/2021  
mm [inches]



## Flow rate chart



## Codes & Standards

DIN 4109

EN 1111

ISO 3822

Scottish Water  
Byelaws

UK Water Supply  
Regulations

Ü-Zeichen



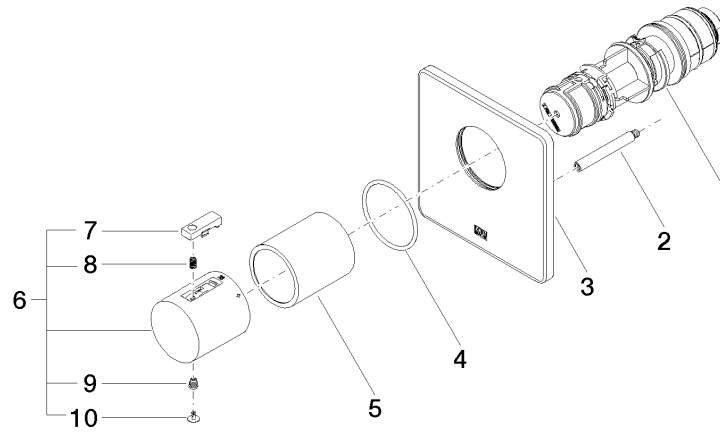
LULU xTOOL Concealed thermostat without volume control 3/4" - Brushed Platinum

LULU

36 503 710    Product version up to 5/11/2021

Certificates and sustainability

WRAS_2011	LGA_29	DVGW_DW-6512DN0	LGA_29	LGA_29
-----------	--------	-----------------	--------	--------



## Spare parts list

No.	Item Number	Name	Quantity used	Delivery time
	3 09 11 02 329-06	plate	1.00	10
	8 90 16 02 027 00 90	spring	1.00	2
	6 90 17 33 004 00-06	handle	1.00	10
	4 90 14 10 049 00 90	seal	1.00	2
	2 90 31 09 095 00 90	bar	1.00	2
	10 90 31 20 049 00-13	plug	1.00	30
	9 90 30 30 136 00 90	screw	1.00	2
	5 90 21 02 112 00-06	sleeve	1.00	10
	7 90 21 33 011 00-13	handle	1.00	2
	1 90 15 02 063 00 90	cartridge	1.00	2