

36 525 979



- HORIZONTAL RAIN, max. flow rate 9 l/min (at 3 bar)
- with anti-scale system
- cover plate 120 x 120 mm

Fits: IMO, LULU, MADISON, MEM, TARA, CL.1, LISSÉ, VAIA, META, CYO

| | | |
|---|-----------------------------------|---------------|
|  | Matte Black | 36 525 979-33 |
|  | Chrome | 36 525 979-00 |
|  | Brushed Platinum | 36 525 979-06 |
|  | Platinum | 36 525 979-08 |
|  | Dark Chrome | 36 525 979-19 |
|  | Light Gold | 36 525 979-26 |
|  | Brushed Light Gold | 36 525 979-27 |
|  | Brushed Durabronze (23kt Gold) | 36 525 979-28 |
|  | Brushed Bronze | 36 525 979-42 |
|  | Brushed Champagne (22kt Gold) | 36 525 979-46 |
|  | Champagne (22kt Gold) | 36 525 979-47 |
|  | Brushed Chrome | 36 525 979-93 |
|  | Brushed Dark Platinum | 36 525 979-99 |

Required miscellaneous



- Concealed wall installation box - 35 205 970 90**
- max. recess depth 110 mm
 - min. recess depth 85 mm

36 525 979

mm [inches]



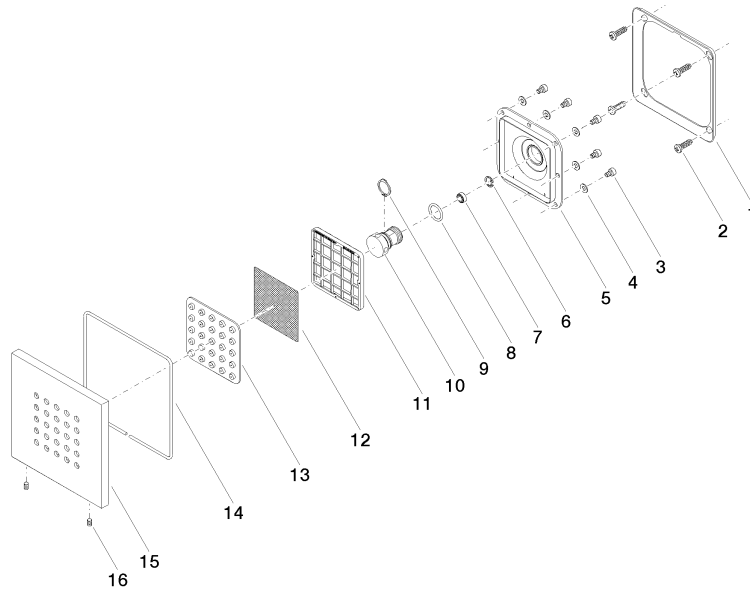
Flow rate chart



Certificates

LGA_38671.

36 525 979



Spare parts list

| No. | Item Number | Name | Quantity used | Delivery time |
|-----|-----------------|--------------|---------------|---------------|
| 1 | 09 28 01 024 90 | holder | 1 | 2 |
| 2 | 09 30 31 022 90 | screw | 4 | 2 |
| 3 | 09 30 30 031 90 | screw | 8 | 2 |
| 4 | 09 30 11 024 90 | disc | 8 | 2 |
| 5 | 09 12 12 205 90 | base | 1 | 2 |
| 6 | 09 16 01 016 90 | ring | 1 | 2 |
| 7 | 09 23 01 136 90 | flow reducer | 1 | 2 |
| 8 | 09 14 10 130 90 | seal | 1 | 2 |
| 9 | 09 16 01 017 90 | ring | 1 | 2 |
| 10 | 09 17 11 146 90 | distributor | 1 | 60 |
| 11 | 09 17 97 057 90 | holder | 1 | 2 |
| 12 | 09 29 30 043 90 | insert | 1 | 2 |
| 13 | 09 12 01 075 90 | insert | 1 | 2 |
| 14 | 09 14 03 117 90 | seal | 1 | 2 |
| 15 | 09 27 98 004-33 | rosette | 1 | 30 |
| 16 | 09 31 11 048 90 | pin | 2 | 2 |