

META Wall valve clockwise closing 1/2" - Brushed Bronze

META

36 607 660    Product version from 4/1/2024



- rosette Ø 60 mm
- head part with cut-to-length spindle and sleeve

	Brushed Bronze	36 607 660-42
	Chrome	36 607 660-00
	Brushed Platinum	36 607 660-06
	Dark Chrome	36 607 660-19
	Light Gold	36 607 660-26
	Brushed Light Gold	36 607 660-27
	Matte Black	36 607 660-33
	Brushed Dark Brass	36 607 660-39
	Brushed Champagne (22kt Gold)	36 607 660-46
	Champagne (22kt Gold)	36 607 660-47
	Brushed Chrome	36 607 660-93
	Brushed Dark Platinum	36 607 660-99



## Codes & Standards

DIN 4109

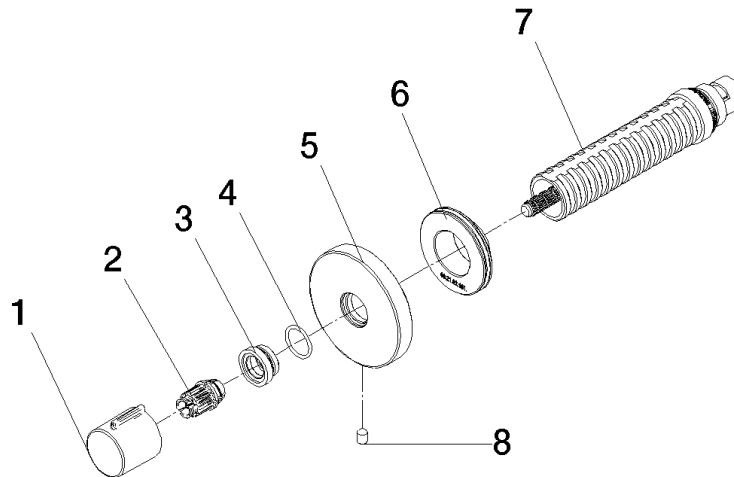
ISO 3822

Ü-Zeichen

## Certificates and sustainability

LGA\_38

Parts for other  
finishes can be found  
here: [Chrome](#)



## Spare parts list

No.	Item Number	Name	Quantity used	Delivery time
8	09 31 11 004 90	pin	1.00	60
2	09 12 12 005 90	fixing cap	1.00	2
1	09 20 98 001-42	handle	1.00	60
3	09 12 12 043-42	base	1.00	60
4	09 14 10 017 90	seal	1.00	2
5	90 27 67 021 94-42	rosette	1.00	30
7	90 90 03 202 00 90	top	1.00	2
6	09 21 02 151 90	sleeve	1.00	2