

LULU Wall valve clockwise closing 1/2" - Brushed Platinum LULU

36 607 710



- rosette 78 x 55 mm
- head part with cut-to-length spindle and sleeve
- WRAS



Brushed Platinum

36 607 710-06



Chrome

36 607 710-00

Required miscellaneous



Wall valve 1/2" -

35 607 970 90

- max. recess depth 145 mm
- min. recess depth 75 mm

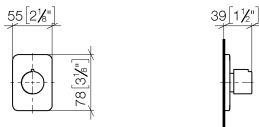


LULU Wall valve clockwise closing 1/2" - Brushed Platinum

LULU

36 607 710

mm [inches]



Codes & Standards

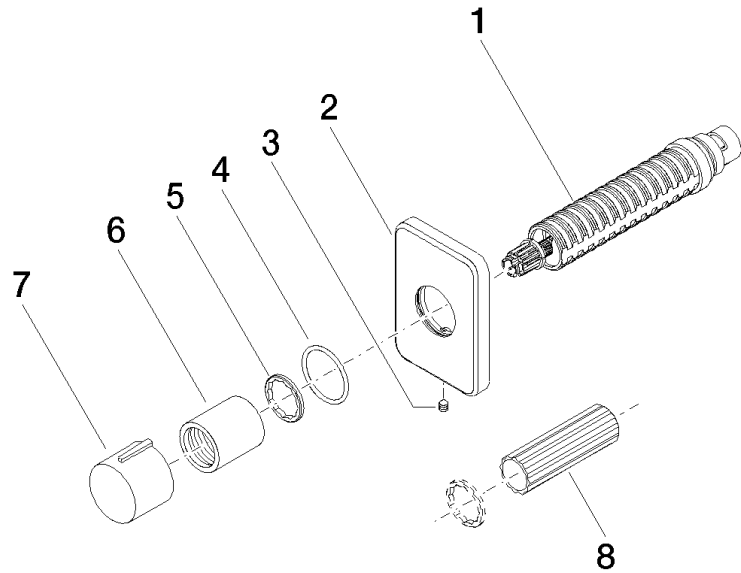
ASME A112.18.1	cUPC	DIN 4109	EN 1111
EN 200	ISO 3822	Scottish Water Byelaws	UK Water Supply Regulations

Ü-Zeichen

Certificates and sustainability

DVGW_DW-6501DN0	WRAS_2011	LGA_29	WRAS_2010	DVGW_DW-6512DN0
LGA_29	IAPMO_4976 (

36 607 710



Spare parts list

No.	Item Number	Name	Quantity used	Delivery time
5	09 16 01 025 90	ring	1.00	2
7	09 20 97 030-06	handle	1.00	10
2	09 27 71 029-06	rosette	1.00	10
1	90 90 03 143 00 90	top	1.00	2
6	09 21 02 070-06	cover	1.00	10
8	90 30 09 010 00 90	key	1.00	2
4	90 14 10 063 00 90	seal	1.00	2
3	90 31 11 007 00 90	pin	1.00	2