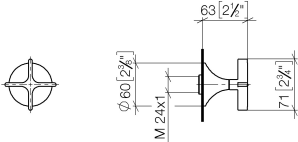




- rosette Ø 60 mm
- head part with cut-to-length spindle and sleeve
- WRAS

	Brushed Dark Brass	36 607 809-39
	Chrome	36 607 809-00
	Brushed Platinum	36 607 809-06
	Platinum	36 607 809-08
	Dark Chrome	36 607 809-19
	Brushed Durabronze (23kt Gold)	36 607 809-28
	Brushed Bronze	36 607 809-42
	Brushed Champagne (22kt Gold)	36 607 809-46
	Champagne (22kt Gold)	36 607 809-47
	Brushed Dark Platinum	36 607 809-99

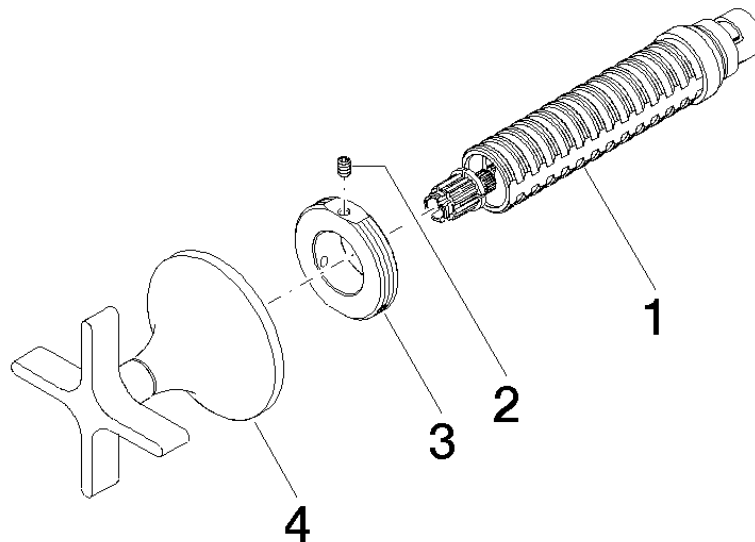
mm [inches]



Codes & Standards			
DIN 4109	EN 1111	ISO 3822	Scottish Water Byelaws
UK Water Supply Regulations	Ü-Zeichen		

Certificates and sustainability			
WRAS_2011	LGA_29	WRAS_2010	DVGW_DW-6512DN0

Parts for other
finishes can be found
here: [Chrome](#)



Spare parts list

No.	Item Number	Name	Quantity used	Delivery time
4	90 20 80 014 00-39	handle	1.00	30
2	09 31 11 008 90	pin	1.00	2
1	90 90 03 143 00 90	top	1.00	2
3	09 21 02 163 90	disc	1.00	2