

## TARA Wall valve clockwise closing 1/2" - Matte Black

TARA

36 607 882 Product version from 10/14/2020 to 8/1/2021



- rosette Ø 55 mm
- head part with cut-to-length spindle and sleeve
- WRAS

	Matte Black	36 607 882-33
	Chrome	36 607 882-00
	Brushed Platinum	36 607 882-06
	Platinum	36 607 882-08
	Dark Chrome	36 607 882-19
	Brushed Durabronze (23kt Gold)	36 607 882-28
	Brushed Dark Brass	36 607 882-39
	Brushed Bronze	36 607 882-42
	Brushed Champagne (22kt Gold)	36 607 882-46
	Champagne (22kt Gold)	36 607 882-47
	Brushed Chrome	36 607 882-93
	Brushed Dark Platinum	36 607 882-99

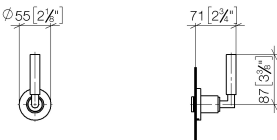
### Required miscellaneous

- Wall valve 1/2" -** 35 607 970 90
- max. recess depth 145 mm
  - min. recess depth 85 mm



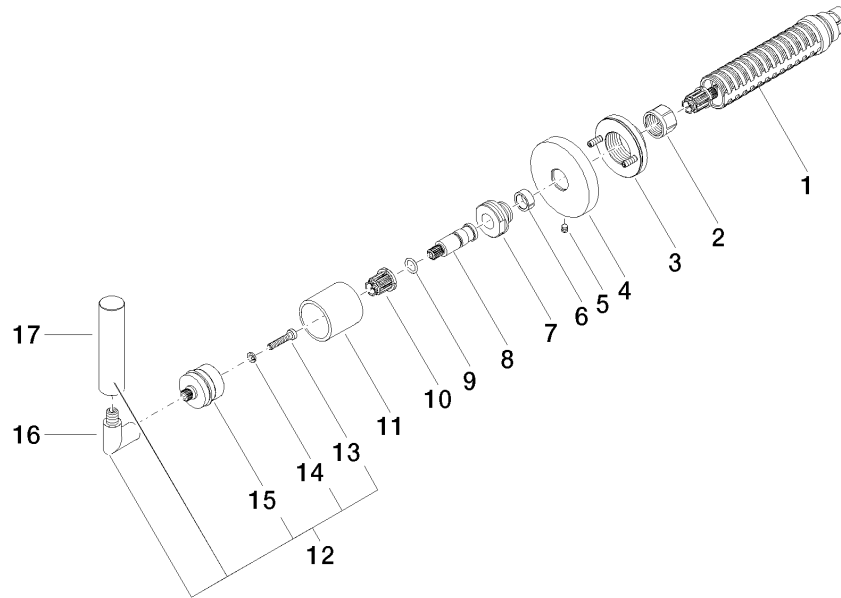
36 607 882
Product version from 10/14/2020 to 8/1/2021

mm [inches]



Codes & Standards			
ASME A112.18.1	cUPC	DIN 4109	EN 1111
EN 200	ISO 3822	Scottish Water Byelaws	UK Water Supply Regulations
Ü-Zeichen			

Certificates and sustainability				
DVGW_DW-6501DN0	WRAS_2011	LGA_29	WRAS_2010	DVGW_DW-6512DN0
LGA_29	IAPMO_4976 (			



## Spare parts list

No.	Item Number	Name	Quantity used	Delivery time
15	90 12 12 007 00-33	base	1.00	30
1	90 90 03 143 00 90	top	1.00	2
7	09 24 05 002 90	nipple	1.00	2
16	04 18 20 022 00-33	angle	1.00	30
8	09 29 06 022 90	spindle	1.00	2
3	90 21 02 108 00 90	disc	1.00	2
11	09 21 02 144-33	sleeve	1.00	30
17	09 20 88 052-33	handle	1.00	30
10	90 12 12 002 00 90	fixing cap	1.00	2
4	09 27 89 115-33	rosette	1.00	30
12	04 20 88 052 00-33	handle	1.00	30
13	90 30 30 075 00 90	screw	1.00	2
9	90 14 10 060 00 90	seal	1.00	2
5	90 31 11 007 00 90	pin	1.00	2
6	90 14 15 020 03 90	ring	1.00	2
2	90 23 30 023 00 90	nut	1.00	2
14	90 30 11 029 00 90	disc	1.00	2