

TARA Wall valve clockwise closing 1/2" - Brushed Chrome
TARA

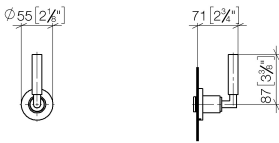
36 607 882
Product version from 10/14/2020 to 8/1/2021



- rosette Ø 55 mm
- head part with cut-to-length spindle and sleeve
- WRAS

	Brushed Chrome	36 607 882-93
	Chrome	36 607 882-00
	Brushed Platinum	36 607 882-06
	Platinum	36 607 882-08
	Dark Chrome	36 607 882-19
	Brushed Durabrass (23kt Gold)	36 607 882-28
	Matte Black	36 607 882-33
	Brushed Dark Brass	36 607 882-39
	Brushed Bronze	36 607 882-42
	Brushed Champagne (22kt Gold)	36 607 882-46
	Champagne (22kt Gold)	36 607 882-47
	Brushed Dark Platinum	36 607 882-99

mm [inches]



Codes & Standards			
ASME A112.18.1	cUPC	DIN 4109	EN 1111
EN 200	ISO 3822	Scottish Water Byelaws	UK Water Supply Regulations
Ü-Zeichen			

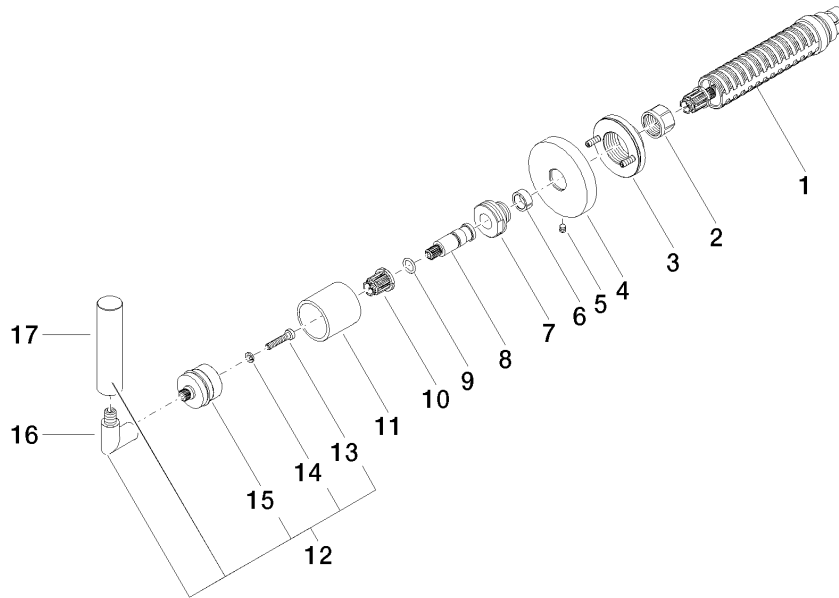
Certificates and sustainability				
DVGW_DW-6501DN0	WRAS_2011	LGA_29	WRAS_2010	DVGW_DW-6512DN0
LGA_29	IAPMO_4976 (

TARA Wall valve clockwise closing 1/2" - Brushed Chrome

TARA

36 607 882 Product version from 10/14/2020 to 8/1/2021

Parts for other
finishes can be found
here: [Chrome](#)



Spare parts list

No.	Item Number	Name	Quantity used	Delivery time
	10 90 12 12 002 00 90	fixing cap	1.00	2
	17 09 20 88 052-93	handle	1.00	20
	8 09 29 06 022 90	spindle	1.00	2
	4 09 27 89 115-93	rosette	1.00	20
	1 90 90 03 143 00 90	top	1.00	2
	12 04 20 88 052 00-93	handle	1.00	20
	16 04 18 20 022 00-93	angle	1.00	-
Spare part can no longer be ordered, please order the replacement item				
	15 90 12 12 007 00-93	base	1.00	20
	3 90 21 02 108 00 90	disc	1.00	2
	7 09 24 05 002 90	nipple	1.00	2
	11 09 21 02 144-93	sleeve	1.00	20
	5 90 31 11 007 00 90	pin	1.00	2
	13 90 30 30 075 00 90	screw	1.00	2
	6 90 14 15 020 03 90	ring	1.00	2
	2 90 23 30 023 00 90	nut	1.00	2
	9 90 14 10 060 00 90	seal	1.00	2
	14 90 30 11 029 00 90	disc	1.00	2