

TARA Wall valve clockwise closing 1/2" - Matte Black
TARA


36 607 892
Product version up to 10/27/2020

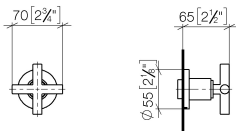
- rosette Ø 55 mm
- head part with cut-to-length spindle and sleeve
- WRAS



	Matte Black	36 607 892-33
	Chrome	36 607 892-00
	Brushed Platinum	36 607 892-06
	Platinum	36 607 892-08
	Dark Chrome	36 607 892-19
	Brushed Durabronze (23kt Gold)	36 607 892-28
	Brushed Bronze	36 607 892-42
	Brushed Champagne (22kt Gold)	36 607 892-46
	Champagne (22kt Gold)	36 607 892-47
	Brushed Chrome	36 607 892-93
	Brushed Dark Platinum	36 607 892-99

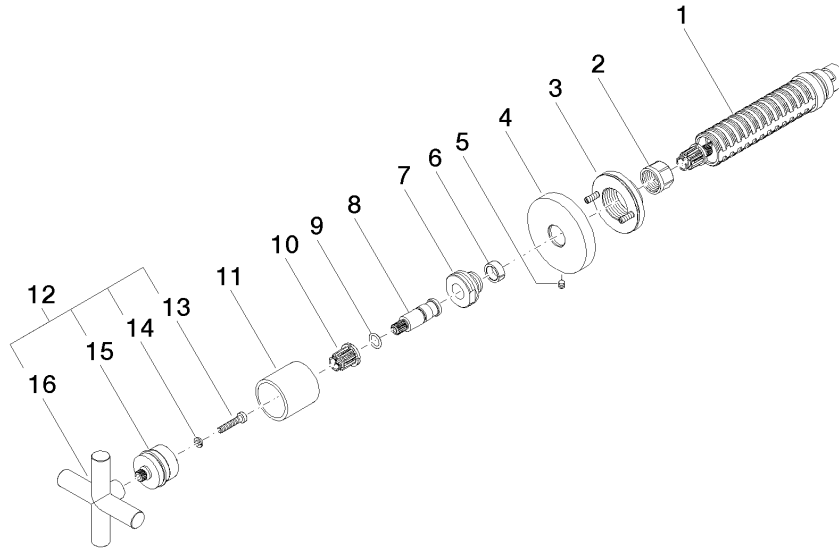
Required miscellaneous

	Wall valve 1/2" - •max. recess depth 145 mm •min. recess depth 85 mm	35 607 970 90
---	---	---------------



Codes & Standards			
ASME A112.18.1	cUPC	DIN 4109	EN 1111
EN 200	ISO 3822	Scottish Water Byelaws	UK Water Supply Regulations
Ü-Zeichen			

Certificates and sustainability				
DVGW_DW-6501DN0	WRAS_2011	LGA_29	WRAS_2010	DVGW_DW-6512DN0
LGA_29	IAPMO_4976 (



Spare parts list

No.	Item Number	Name	Quantity used	Delivery time
	3 90 21 02 108 00 90	disc	1.00	2
	4 09 27 89 108-33	rosette	1.00	30
	8 09 29 06 022 90	spindle	1.00	2
	15 90 12 12 007 00-33	base	1.00	30
	7 09 24 05 002 90	nipple	1.00	2
	10 90 12 12 002 00 90	fixing cap	1.00	2
	1 90 90 03 143 00 90	top	1.00	2
	16 09 20 89 010-33	handle	1.00	60
	11 09 21 02 144-33	sleeve	1.00	30
	14 90 30 11 029 00 90	disc	1.00	2
	6 90 14 15 020 03 90	ring	1.00	2
	13 90 30 30 075 00 90	screw	1.00	2
	12 90 20 89 010 10-33	handle	1.00	30
	5 90 31 11 007 00 90	pin	1.00	2
	2 90 23 30 023 00 90	nut	1.00	2
	9 90 14 10 060 00 90	seal	1.00	2