

VAIA Wall valve clockwise closing 3/4" - Chrome

VAIA

36 608 809

Product version from 4/1/2025



- rosette Ø 60 mm
- head part with cut-to-length spindle and sleeve
- WRAS

| | | |
|--|-------------------------------------|---------------|
|  | Chrome | 36 608 809-00 |
|  | Brushed Platinum | 36 608 809-06 |
|  | Platinum | 36 608 809-08 |
|  | Dark Chrome | 36 608 809-19 |
|  | Brushed Durabronze (23kt Gold) | 36 608 809-28 |
|  | Brushed Dark Brass | 36 608 809-39 |
|  | Brushed Bronze | 36 608 809-42 |
|  | Brushed Champagne (22kt Gold) | 36 608 809-46 |
|  | Champagne (22kt Gold) | 36 608 809-47 |
|  | Brushed Dark Platinum | 36 608 809-99 |

Required miscellaneous

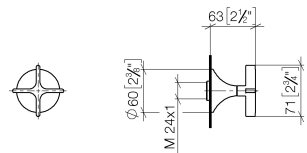


- Wall valve 3/4" -

•max. recess depth 145 mm

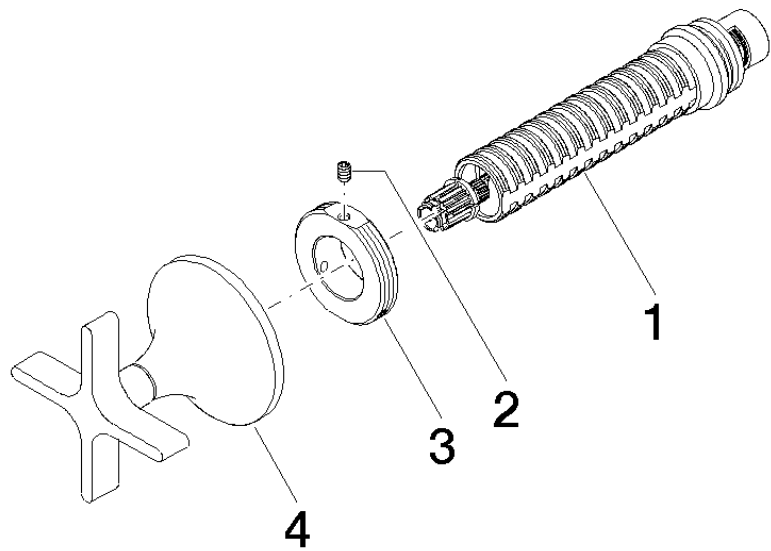
•min. recess depth 75 mm

35 608 970 90



| Codes & Standards | | | |
|-------------------|------|---------------------------|--------------------------------|
| ASME A112.18.1 | cUPC | Scottish Water Byelaws | UK Water Supply Regulations |

| Certificates and sustainability | |
|---------------------------------|--------------|
| WRAS_2010 | IAPMO_4976 (|



Spare parts list

| No. | Item Number | Name | Quantity used | Delivery time |
|-----|--------------------|--------|---------------|---------------|
| 3 | 09 21 02 163 90 | disc | 1.00 | 2 |
| 4 | 90 20 80 014 00-00 | handle | 1.00 | 10 |
| 2 | 09 31 11 008 90 | pin | 1.00 | 2 |
| 1 | 90 90 03 127 00 90 | top | 1.00 | 2 |