

VAIA Wall valve clockwise closing 3/4" - Brushed Champagne (22kt Gold)
VAIA

36 608 809
Product version from 4/1/2025



- rosette Ø 60 mm
- head part with cut-to-length spindle and sleeve
- WRAS

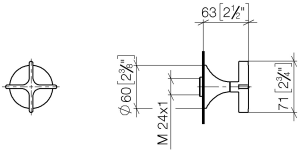
	Brushed Champagne (22kt Gold)	36 608 809-46
	Chrome	36 608 809-00
	Brushed Platinum	36 608 809-06
	Platinum	36 608 809-08
	Dark Chrome	36 608 809-19
	Brushed Durabronze (23kt Gold)	36 608 809-28
	Brushed Dark Brass	36 608 809-39
	Brushed Bronze	36 608 809-42
	Champagne (22kt Gold)	36 608 809-47
	Brushed Dark Platinum	36 608 809-99

Required miscellaneous



- Wall valve 3/4" -**
35 608 970 90

  - max. recess depth 145 mm
  - min. recess depth 75 mm

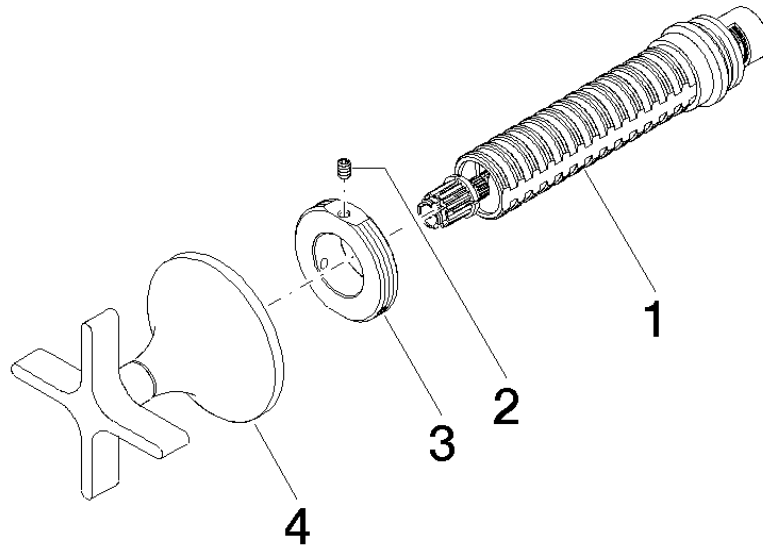


Codes & Standards

ASME A112.18.1	cUPC	Scottish Water Byelaws	UK Water Supply Regulations
----------------	------	---------------------------	--------------------------------

Certificates and sustainability

WRAS_2010	IAPMO_4976 (
-----------	--------------



## Spare parts list

No.	Item Number	Name	Quantity used	Delivery time
3	09 21 02 163 90	disc	1.00	2
1	90 90 03 127 00 90	top	1.00	2
2	09 31 11 008 90	pin	1.00	2
4	90 20 80 014 00-46	handle	1.00	30