

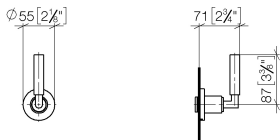
TARA Wall valve clockwise closing 3/4" - Brushed Bronze
TARA

36 608 882
Product version from 10/27/2020



- rosette Ø 55 mm
- head part with cut-to-length spindle and sleeve
- WRAS

	Brushed Bronze	36 608 882-42
	Chrome	36 608 882-00
	Brushed Platinum	36 608 882-06
	Platinum	36 608 882-08
	Dark Chrome	36 608 882-19
	Brushed Durabrass (23kt Gold)	36 608 882-28
	Matte Black	36 608 882-33
	Brushed Champagne (22kt Gold)	36 608 882-46
	Champagne (22kt Gold)	36 608 882-47
	Brushed Chrome	36 608 882-93
	Brushed Dark Platinum	36 608 882-99



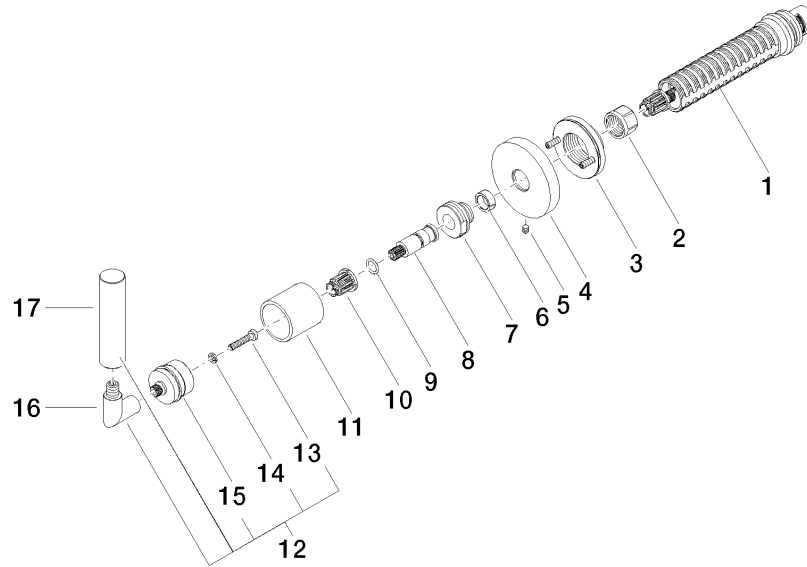
Codes & Standards

ASME A112.18.1	cUPC	Scottish Water Byelaws	UK Water Supply Regulations
----------------	------	---------------------------	--------------------------------

Certificates and sustainability

WRAS_2010	IAPMO_4976 (
-----------	--------------

Parts for other
finishes can be found
here: [Chrome](#)



Spare parts list

No.	Item Number	Name	Quantity used	Delivery time
	3 90 21 02 108 00 90	disc	1.00	2
	17 09 20 88 052-42	handle	1.00	60
	9 90 14 10 060 00 90	seal	1.00	2
	4 09 27 89 115-42	rosette	1.00	60
	15 90 12 12 007 00-42	base	1.00	30
	12 04 20 88 052 00-42	handle	1.00	-
Spare part can no longer be ordered, please order the replacement item				
	5 90 31 11 007 00 90	pin	1.00	2
	14 90 30 11 029 00 90	disc	1.00	2
	8 09 29 06 022 90	spindle	1.00	2
	13 90 30 30 075 00 90	screw	1.00	2
	1 90 90 03 127 00 90	top	1.00	2
	16 04 18 20 022 00-42	angle	1.00	-
Spare part can no longer be ordered, please order the replacement item				
	6 90 14 15 020 03 90	ring	1.00	2
	10 90 12 12 002 00 90	fixing cap	1.00	2
	7 09 24 05 002 90	nipple	1.00	2
	11 09 21 02 144-42	sleeve	1.00	60
	2 90 23 30 023 00 90	nut	1.00	2