

VAIA Wall-mounted basin mixer without pop-up waste - Brushed Bronze

VAIA

36 702 809



- 125mm projection
- fixed spout
- circular, air-enriched flow
- hole diameter valve 35 mm
- hole diameter spout 35 mm
- rosettes Ø 60 mm
- max. flow 5.7 l/min
- lead-free
- This product can help a building meet the requirements of Green Building Rating Systems, e.g. LEED®, BREEAM®, DGNB
- WRAS

	Brushed Bronze	36 702 809-42
	Chrome	36 702 809-00
	Brushed Platinum	36 702 809-06
	Platinum	36 702 809-08
	Dark Chrome	36 702 809-19
	Brushed Durabronze (23kt Gold)	36 702 809-28
	Brushed Champagne (22kt Gold)	36 702 809-46
	Champagne (22kt Gold)	36 702 809-47
	Brushed Dark Platinum	36 702 809-99

Required miscellaneous



- Concealed wall-mounted mixer variable positioning -** 35 720 970 90
- min. recess depth 85 mm
 - max. recess depth 145 mm

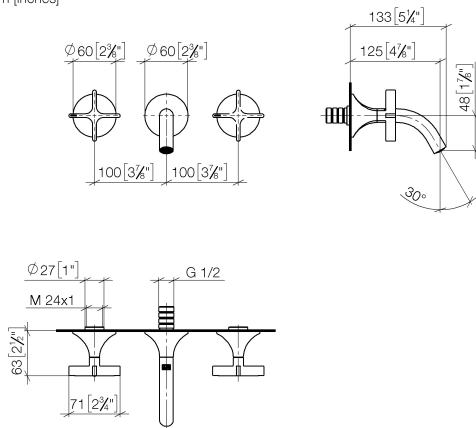
Required miscellaneous



- Concealed wall-mounted mixer centred spout -** 35 700 970 90
- min. recess depth 85 mm
 - max. recess depth 145 mm

36 702 809

mm [inches]



Flow rate chart



Codes & Standards

DIN 4109

ISO 3822

Scottish Water
Byelaws

UK Water Supply
Regulations

Ü-Zeichen



VAIA Wall-mounted basin mixer without pop-up waste - Brushed Bronze

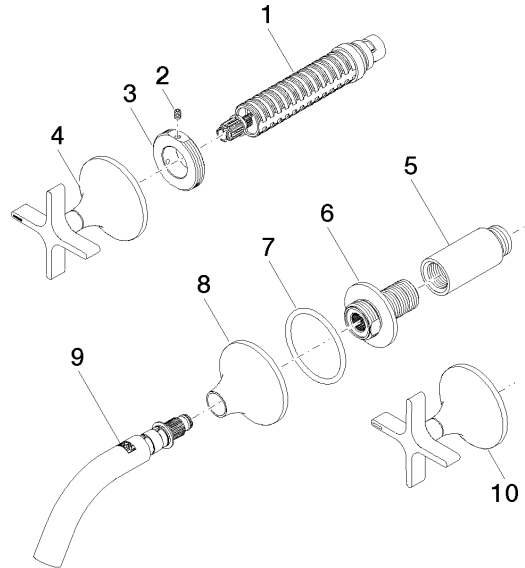
VAIA

36 702 809

Certificates and sustainability

LGA_38

WRAS_2312



Spare parts list

No.	Item Number	Name	Quantity used	Delivery time
	2 09 31 11 008 90	pin	2.00	2
	9 90 28 22 365 00-42	spout	1.00	30
	10 90 20 80 010 00-42	handle (cold)	1.00	30
	7 09 14 10 084 90	seal	1.00	2
	3 09 21 02 163 90	disc	2.00	2
	4 90 20 80 011 00-42	handle (hot)	1.00	30
	8 09 27 80 011-42	rosette	1.00	60
	1 90 90 03 157 00 90	top	2.00	2
	5 09 24 03 081 10 90	extension	1.00	2
	6 09 24 03 269 90	nipple	1.00	2