

VAIA Wall-mounted basin mixer without pop-up waste - Brushed Dark Platinum

VAIA

36 702 819



- 125mm projection
- fixed spout
- circular, air-enriched flow
- hole diameter valve 35 mm
- hole diameter spout 35 mm
- rosettes Ø 60 mm
- max. flow 5.7 l/min
- lead-free
- This product can help a building meet the requirements of Green Building Rating Systems, e.g. LEED®, BREEAM®, DGNB
- WRAS

	Brushed Dark Platinum	36 702 819-99
	Chrome	36 702 819-00
	Brushed Platinum	36 702 819-06
	Platinum	36 702 819-08
	Dark Chrome	36 702 819-19
	Brushed Durabronze (23kt Gold)	36 702 819-28
	Brushed Bronze	36 702 819-42
	Brushed Champagne (22kt Gold)	36 702 819-46
	Champagne (22kt Gold)	36 702 819-47

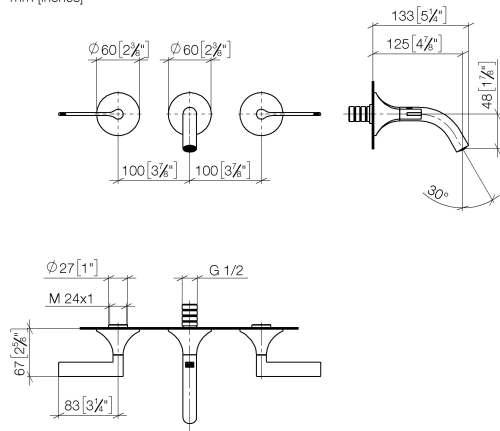
Required miscellaneous



- Concealed wall-mounted mixer centred spout -** 35 700 970 90
- max. recess depth 145 mm
 - min. recess depth 85 mm

36 702 819

mm [inches]



Flow rate chart



Codes & Standards

DIN 4109

ISO 3822

Scottish Water
Byelaws

UK Water Supply
Regulations

Ü-Zeichen



VAIA Wall-mounted basin mixer without pop-up waste - Brushed Dark Platinum

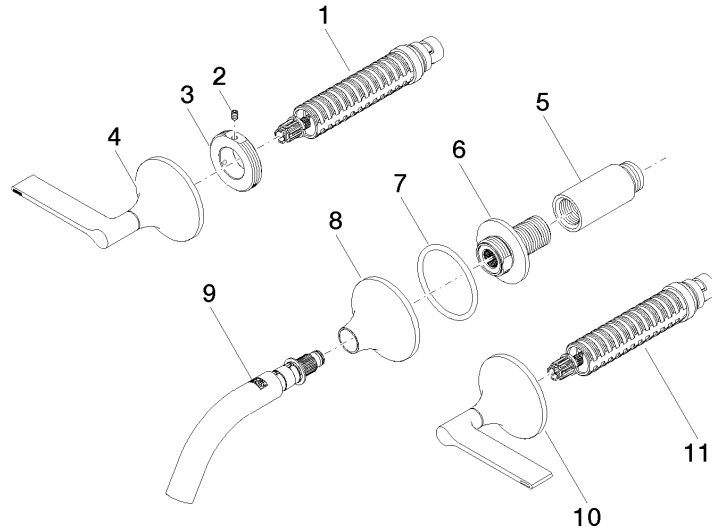
VAIA

36 702 819

Certificates and sustainability

LGA_38

WRAS_2312



Spare parts list

No.	Item Number	Name	Quantity used	Delivery time
11	90 90 03 156 00 90	top	1.00	2
10	90 20 80 012 00-99	handle (cold)	1.00	20
1	90 90 03 157 00 90	top	1.00	2
5	09 24 03 081 10 90	extension	1.00	2
7	09 14 10 084 90	seal	1.00	2
3	09 21 02 163 90	disc	2.00	2
2	09 31 11 008 90	pin	2.00	2
4	90 20 80 013 00-99	handle (hot)	1.00	20
9	90 28 22 365 00-99	spout	1.00	20
6	09 24 03 269 90	nipple	1.00	2
8	09 27 80 011-99	rosette	1.00	20