

IMO Wall-mounted basin mixer without pop-up waste - Chrome








IMO

36 707 671

Product version from 4/1/2024



- 141mm projection
- fixed spout
- rectangular, air-enriched flow
- hole diameter valve 40 mm
- hole diameter spout 40 mm
- individual rosettes 60 x 60 mm
- max. flow 4.6 l/min
- lead-free
- This product can help a building meet the requirements of Green Building Rating Systems, e.g. LEED®, BREEAM®, DGNB

	Chrome	36 707 671-00
	Brushed Platinum	36 707 671-06
	Dark Chrome	36 707 671-19
	Brushed Light Gold	36 707 671-27
	Matte Black	36 707 671-33
	Brushed Chrome	36 707 671-93
	Brushed Dark Platinum	36 707 671-99

Required miscellaneous



- Concealed wall-mounted mixer

variable positioning -

 - min. recess depth 110 mm
 - max. recess depth 150 mm

35 720 970 90

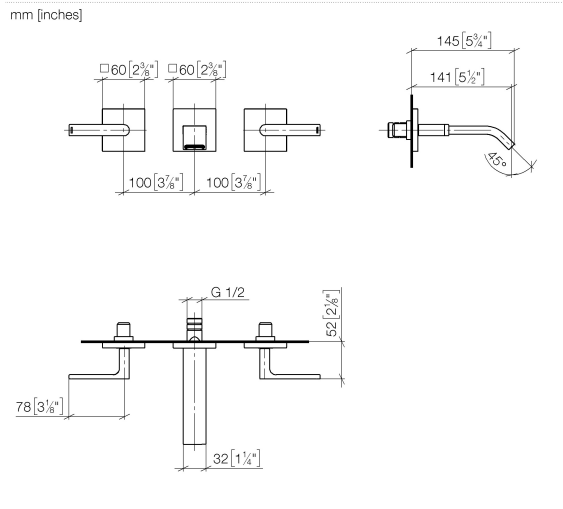


- Concealed wall-mounted mixer

centred spout -

 - min. recess depth 110 mm
 - max. recess depth 150 mm

35 700 970 90



Flow rate chart



Codes & Standards

DIN 4109

ISO 3822

Scottish Water
Byelaws

UK Water Supply
Regulations

Ü-Zeichen



IMO Wall-mounted basin mixer without pop-up waste - Chrome

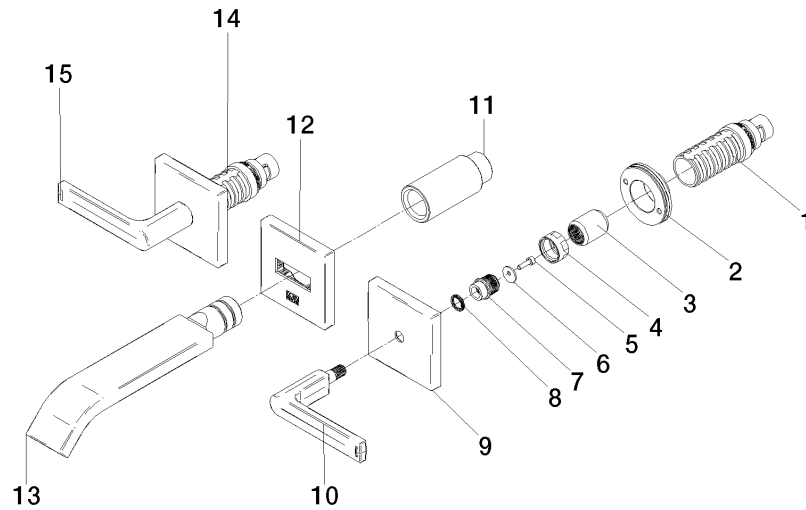
IMO

36 707 671 Product version from 4/1/2024

Certificates and sustainability

LGA_38

WRAS_250402



Spare parts list

No.	Item Number	Name	Quantity used	Delivery time
10	90 20 67 025 00-00	handle (cold)	1.00	10
14	90 90 03 156 00 90	top	1.00	2
7	09 12 12 057 90	fixing cap	2.00	2
2	90 21 02 108 00 90	disc	2.00	2
9	09 27 78 033-00	rosette	1.00	10
6	09 30 11 193 90	disc	2.00	2
11	09 24 03 081 10 90	extension	1.00	2
12	90 27 67 026 00-00	rosette	1.00	10
5	09 30 30 167 90	screw	2.00	2
3	09 12 12 059 90	sleeve	2.00	2
8	09 14 03 187 90	seal	2.00	2
1	90 90 03 157 00 90	top	1.00	2
4	09 23 30 074 90	nut	2.00	2
13	90 28 22 412 00-00	spout	1.00	10
15	90 20 67 026 00-00	handle (hot)	1.00	10