

IMO Wall-mounted basin mixer without pop-up waste - Chrome

IMO

36 712 671 Product version from 4/1/2024



- 171mm projection
- fixed spout
- rectangular, air-enriched flow
- hole diameter valve 40 mm
- hole diameter spout 40 mm
- individual rosettes 60 x 60 mm
- max. flow 4.6 l/min
- lead-free
- This product can help a building meet the requirements of Green Building Rating Systems, e.g. LEED®, BREEAM®, DGNB

| | | |
|--|-----------------------|---------------|
| | Chrome | 36 712 671-00 |
| | Brushed Platinum | 36 712 671-06 |
| | Dark Chrome | 36 712 671-19 |
| | Brushed Light Gold | 36 712 671-27 |
| | Matte Black | 36 712 671-33 |
| | Brushed Chrome | 36 712 671-93 |
| | Brushed Dark Platinum | 36 712 671-99 |

Required miscellaneous

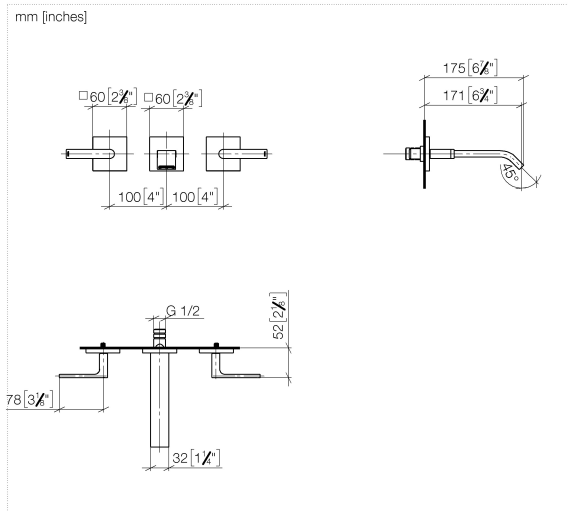


- Concealed wall-mounted mixer centred spout -** 35 700 970 90
- min. recess depth 110 mm
 - max. recess depth 150 mm

Required miscellaneous



- Concealed wall-mounted mixer variable positioning -** 35 720 970 90
- min. recess depth 110 mm
 - max. recess depth 150 mm



Flow rate chart



Codes & Standards

DIN 4109

ISO 3822

Scottish Water
Byelaws

UK Water Supply
Regulations

Ü-Zeichen



IMO Wall-mounted basin mixer without pop-up waste - Chrome

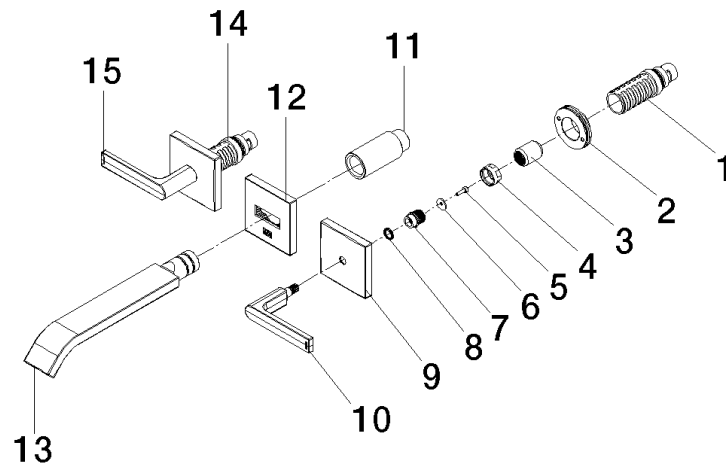
IMO

36 712 671 Product version from 4/1/2024

Certificates and sustainability

LGA_38

WRAS_250402



Spare parts list

| No. | Item Number | Name | Quantity used | Delivery time |
|-----|--------------------|-----------------|---------------|---------------|
| 9 | 09 27 78 033-00 | rosette | 2.00 | 10 |
| 3 | 09 12 12 059 90 | sleeve | 2.00 | 2 |
| 6 | 09 30 11 193 90 | disc | 2.00 | 2 |
| 14 | 90 90 03 156 00 90 | top | 1.00 | 2 |
| 10 | 90 20 67 025 00-00 | handle (cold) | 1.00 | 10 |
| 11 | 09 24 03 081 10 90 | extension | 1.00 | 2 |
| 12 | 90 27 67 026 00-00 | rosette | 1.00 | 10 |
| 7 | 09 12 12 057 90 | fixing cap | 2.00 | 2 |
| 1 | 90 90 03 157 00 90 | top | 1.00 | 2 |
| 8 | 09 14 03 187 90 | seal | 2.00 | 2 |
| 15 | 90 20 67 026 00-00 | handle (hot) | 1.00 | 10 |
| 2 | 90 21 02 108 00 90 | disc | 2.00 | 2 |
| 4 | 09 23 30 074 90 | nut | 2.00 | 2 |
| 13 | 90 28 22 413 00-00 | spout | 1.00 | 10 |
| 5 | 09 30 30 167 90 | screw | 2.00 | 2 |