

36 712 819 Product version from 3/13/2017

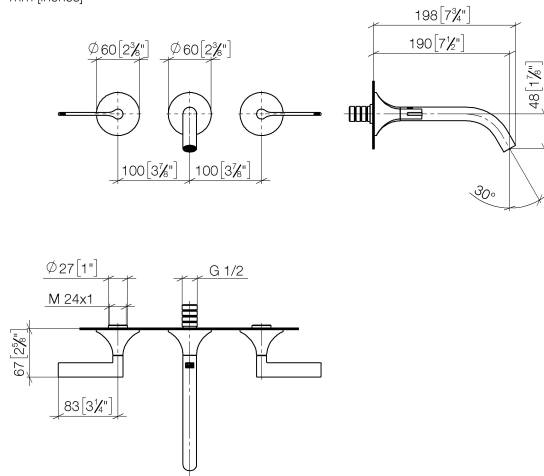


- 190mm projection
- fixed spout
- circular, air-enriched flow
- hole diameter valve 37 mm
- hole diameter spout 40 mm
- rosettes Ø 60 mm
- max. flow 5.7 l/min
- lead-free
- This product can help a building meet the requirements of Green Building Rating Systems, e.g. LEED®, BREEAM®, DGNB
- WRAS

| | | |
|--|--------------------------------|---------------|
|  | Brushed Dark Brass | 36 712 819-39 |
|  | Chrome | 36 712 819-00 |
|  | Brushed Platinum | 36 712 819-06 |
|  | Platinum | 36 712 819-08 |
|  | Dark Chrome | 36 712 819-19 |
|  | Brushed Durabronze (23kt Gold) | 36 712 819-28 |
|  | Brushed Bronze | 36 712 819-42 |
|  | Brushed Champagne (22kt Gold) | 36 712 819-46 |
|  | Champagne (22kt Gold) | 36 712 819-47 |
|  | Brushed Dark Platinum | 36 712 819-99 |

36 712 819 Product version from 3/13/2017

mm [inches]



Flow rate chart



Codes & Standards

DIN 4109

ISO 3822

Scottish Water
Byelaws

UK Water Supply
Regulations

Ü-Zeichen



VAIA Wall-mounted basin mixer without pop-up waste - Brushed Dark Brass

VAIA

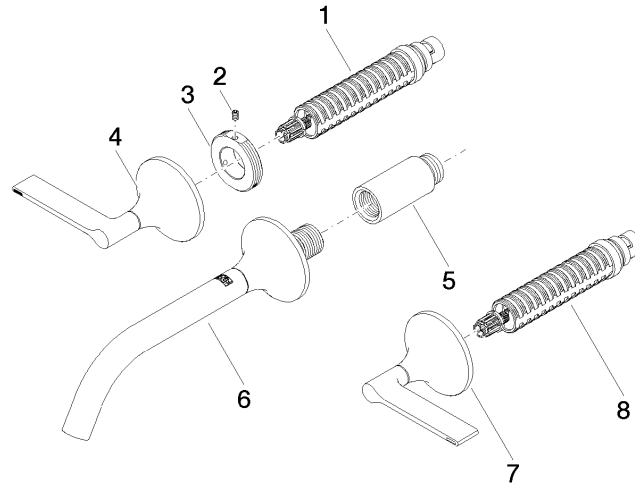
36 712 819 Product version from 3/13/2017

Certificates and sustainability

LGA_29

WRAS_2312

Parts for other
finishes can be found
here: [Chrome](#)



Spare parts list

| No. | Item Number | Name | Quantity used | Delivery time |
|-----|--------------------|--|---------------|---------------|
| 4 | 90 20 80 013 00-39 | handle (hot) | 1.00 | 30 |
| 6 | 13 800 809-39 | VAIA Wall-mounted basin spout without pop-up waste - Brushed Dark Brass | 1.00 | 30 |
| 1 | 90 90 03 156 00 90 | top | 1.00 | 2 |
| 5 | 09 24 03 081 10 90 | extension | 1.00 | 2 |
| 7 | 90 20 80 012 00-39 | handle (cold) | 1.00 | 30 |
| 8 | 90 90 03 157 00 90 | top | 1.00 | 2 |
| 3 | 09 21 02 163 90 | disc | 2.00 | 2 |
| 2 | 09 31 11 008 90 | pin | 2.00 | 2 |