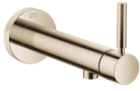



36 804 661



- 160mm projection
- fixed spout
- circular, air-enriched flow
- hole diameter 60 mm
- rosette Ø 78 mm
- max. flow 5.7 l/min
- lead-free
- with single-point mounting
- This product can help a building meet the requirements of Green Building Rating Systems, e.g. LEED®, BREEAM®, DGNB
- WRAS 2003025

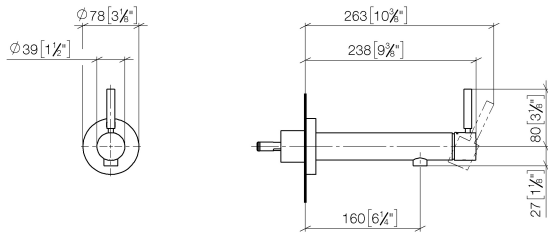
| | | |
|---|-------------------------------|--------------------|
|  | Light Gold | 36 804 661-26 |
|  | Chrome | 36 804 661-00 |
|  | Brushed Platinum | 36 804 661-06 |
|  | Dark Chrome | 36 804 661-19 |
|  | Brushed Light Gold | 36 804 661-27 |
|  | Matte Black | 36 804 661-33 |
|  | Brushed Bronze | 36 804 661-42 |
|  | Brushed Champagne (22kt Gold) | 36 804 661-46 |
|  | Champagne (22kt Gold) | 36 804 661-47 |
|  | Brushed Chrome | 36 804 661-93 |
|  | Brushed Dark Platinum | 36 804 661-99 |
|  | Brushed Dark Platinum | 36 804 661-99 0010 |

Required miscellaneous

| | | |
|---|---|---------------|
|  | Concealed wall mounting - •min. recess depth 78 mm •max. recess depth 103 mm | 35 003 970 90 |
|---|---|---------------|

36 804 661

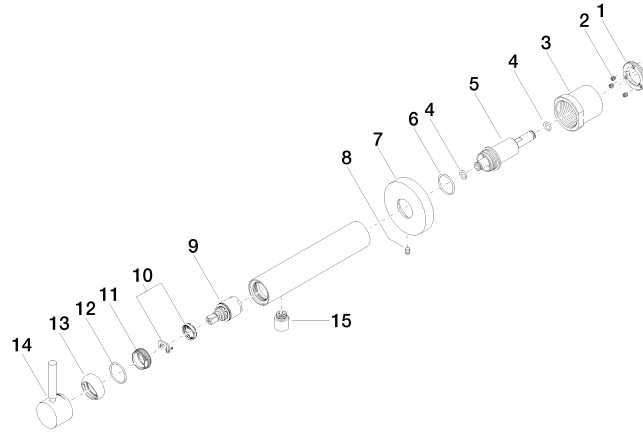
mm [inches]



Flow rate chart



36 804 661



Spare parts list

| No. | Item Number | Name | Quantity used | Delivery time |
|-----|--------------------|-------------|---------------|---------------|
| 1 | 09 24 77 002 90 | nut | 1 | 2 |
| 2 | 90 31 11 030 00 90 | pin | 3 | 2 |
| 3 | 09 21 02 128 90 | sleeve | 1 | 2 |
| 4 | 09 14 10 139 90 | seal | 2 | 2 |
| 5 | 09 24 04 210 10 90 | nipple | 1 | 2 |
| 6 | 90 14 10 063 00 90 | seal | 1 | 2 |
| 7 | 09 27 88 009-26 | rosette | 1 | 60 |
| 8 | 09 31 11 144 90 | pin | 1 | 2 |
| 9 | 90 15 05 044 00 90 | cartridge | 1 | 2 |
| 10 | 90 28 10 148 00 90 | accessories | 1 | 2 |
| 11 | 09 24 04 266 90 | nut | 1 | 2 |
| 12 | 09 14 10 120 90 | seal | 1 | 2 |
| 13 | 09 28 30 043-26 | cover | 1 | 60 |
| 14 | 90 20 66 024 00-26 | handle | 1 | 30 |
| 15 | 90 23 01 168 00-26 | aerator | 1 | 30 |