

## MEM Wall-mounted single-lever basin mixer without pop-up waste - Chrome

MEM

36 805 782 Product version from 9/1/2022



- 185mm projection
- fixed spout
- rectangular, air-enriched flow
- hole diameter 35 mm
- rosette Ø 60 mm
- max. flow 5.7 l/min
- lead-free
- with single-point mounting
- This product can help a building meet the requirements of Green Building Rating Systems, e.g. LEED®, BREEAM®, DGNB
- WRAS

	Chrome	36 805 782-00
	Brushed Platinum	36 805 782-06
	Platinum	36 805 782-08
	Dark Chrome	36 805 782-19
	Brushed Durabronze (23kt Gold)	36 805 782-28
	Brushed Champagne (22kt Gold)	36 805 782-46
	Champagne (22kt Gold)	36 805 782-47
	Brushed Dark Platinum	36 805 782-99

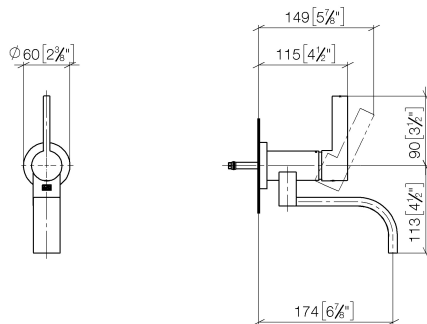
### Required miscellaneous



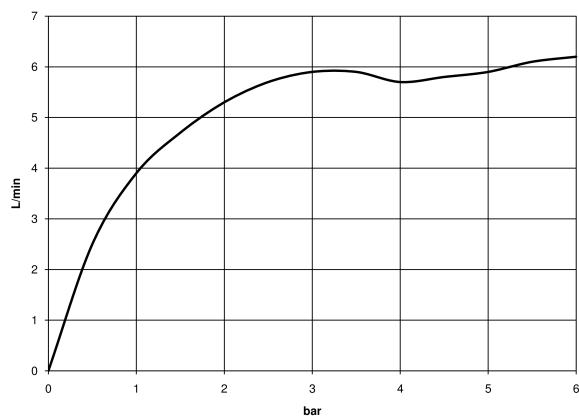
- Concealed wall mounting -**
- min. recess depth 80 mm
  - max. recess depth 105 mm

35 050 970 90

mm [inches]



### Flow rate chart



### Codes & Standards

DIN 4109

ISO 3822

Scottish Water  
Byelaws

UK Water Supply  
Regulations

Ü-Zeichen



## MEM Wall-mounted single-lever basin mixer without pop-up waste - Chrome

---

MEM

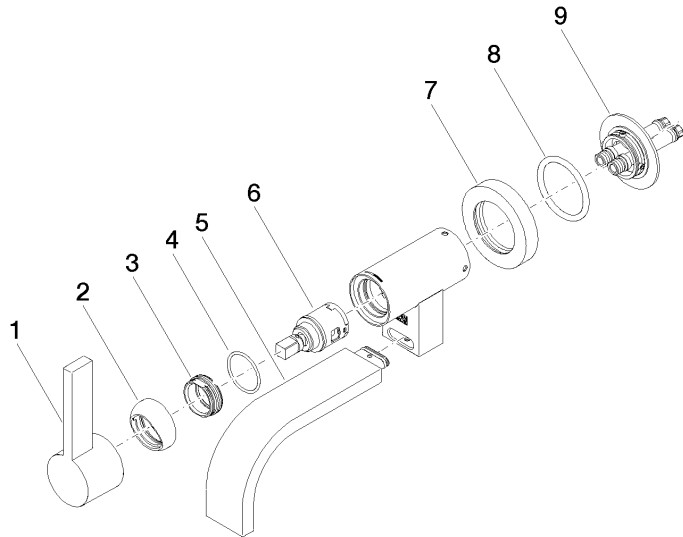
36 805 782 Product version from 9/1/2022

Certificates and sustainability

---

LGA\_38

WRAS\_240102



## Spare parts list

No.	Item Number	Name	Quantity used	Delivery time
5	90 28 22 361 00-00	spout	1.00	10
9	90 30 11 296 00 90	flange	1.00	2
8	09 14 10 041 90	seal	1.00	2
2	09 28 30 043-00	cover	1.00	10
4	09 14 10 120 90	seal	1.00	2
3	09 24 04 266 90	nut	1.00	2
6	90 15 05 042 00 90	cartridge	1.00	2
7	09 27 89 004-00	rosette	1.00	10
1	90 20 87 003 00-00	handle	1.00	10