





DORNBRACHT YAMOU Wall-mounted single-lever basin mixer without pop-up waste - Soft Black

DORNBRACHT
YAMOU

36 860 831 Product version from 1/1/2023



- 170mm projection
- fixed spout
- circular, air-enriched flow
- hole diameter spout 37 mm
- hole diameter single-lever mixer 57 mm
- rosette for spout Ø 60mm
- max. flow 6.8 l/min
- rosette for mixer Ø 78mm
- WRAS

	Soft Black	36 860 831-69
	Chrome	36 860 831-00

Required miscellaneous

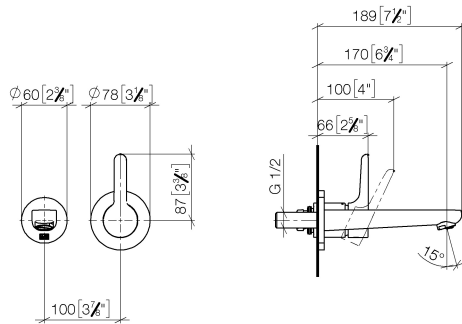


SERIES SPECIFIC Concealed wall-mounted single-lever mixer mixer on right - 35 870 970 90

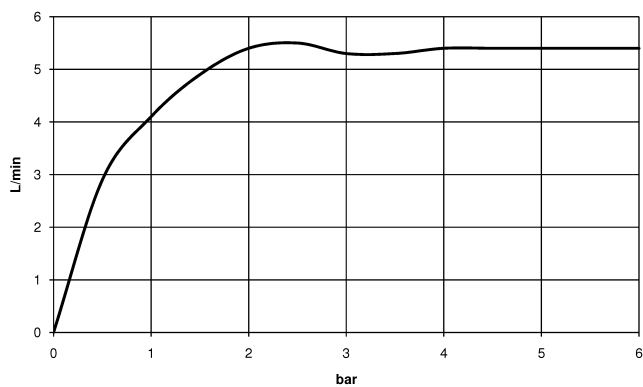
DORNBRAUCHT YAMOU Wall-mounted single-lever basin mixer without pop-up waste - Soft Black

DORNBRAUCHT
YAMOU

36 860 831 Product version from 1/1/2023
mm [inches]



Flow rate chart



Codes & Standards

DIN 4109

EN 817

ISO 3822

Scottish Water
Byelaws

UK Water Supply
Regulations

Ü-Zeichen

XP P 41-280



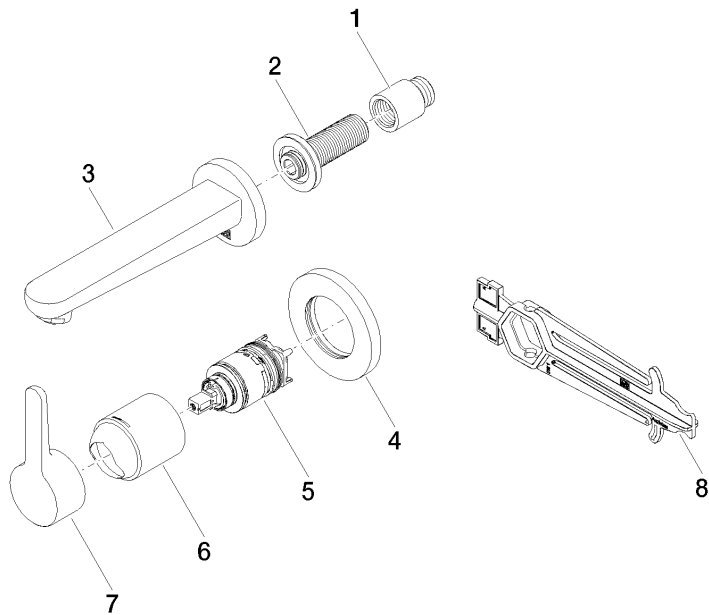
DORNBACHT YAMOU Wall-mounted single-lever basin mixer without pop-up waste - Soft Black

DORNBACHT
YAMOU

36 860 831 Product version from 1/1/2023

Certificates and sustainability

AbP_10	ACS_23 ACC NY	WRAS_240504	DVGW_DW-6512DO0
--------	---------------	-------------	-----------------



Spare parts list

No.	Item Number	Name	Quantity used	Delivery time
2	90 24 03 316 00 90	nipple	1.00	2
1	09 24 03 080 90	extension	1.00	2
8	90 30 09 064 00 90	key	1.00	2
3	90 11 06 220 00-69	spout	1.00	2
7	90 20 83 071 00-69	handle	1.00	2
6	90 11 02 393 00-69	cover	1.00	2
5	90 15 05 071 00 90	cartridge	1.00	2
4	90 27 83 026 00-69	rosette	1.00	2