


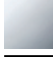




LISSÉ Wall-mounted single-lever basin mixer without pop-up waste - Brushed Dark Platinum

LISSÉ


36 860 845




- 170mm projection
- fixed spout
- circular, air-enriched flow
- hole diameter spout 37 mm
- hole diameter single-lever mixer 57 mm
- rosette 78 x 78 mm
- max. flow 5.7 l/min
- lead-free
- This product can help a building meet the requirements of Green Building Rating Systems, e.g. LEED®, BREEAM®, DGNB

	Brushed Dark Platinum	36 860 845-99
	Chrome	36 860 845-00
	Brushed Platinum	36 860 845-06
	Dark Chrome	36 860 845-19
	Matte Black	36 860 845-33
	Brushed Chrome	36 860 845-93

Required miscellaneous

	Concealed wall-mounted single-lever mixer mixer on right -	35 816 970 90
	<ul style="list-style-type: none"> •NOTE:Not suitable for concealed installation.Connection by means of angle valves, mounted with screws to back wall. 	

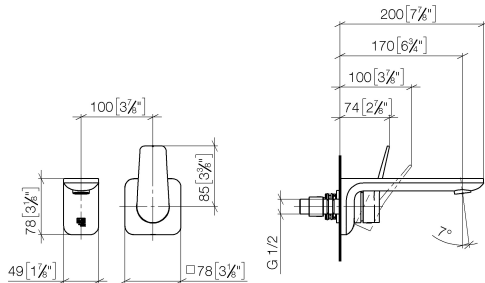
Required miscellaneous

	Concealed wall-mounted single-lever mixer -	35 860 970 90
	<ul style="list-style-type: none"> •min. recess depth 80 mm •max. recess depth 95 mm 	

Recommended miscellaneous

	Basin Waste with knob for deck mounting 1 1/4" - Brushed Dark Platinum	10 200 970-99
--	---	---------------

36 860 845
mm [inches]



Flow rate chart



Certificates

IAPMO_N-4976 (2). DVGW_DW-6512DN0435. IAPMO_8834 (2). IAPMO_6397 (2). WRAS_2107018.

36 860 845

