

META Wall-mounted single-lever basin mixer without pop-up waste - Dark Chrome

META

36 861 660



- 250mm projection
- fixed spout
- circular, air-enriched flow
- hole diameter spout 37 mm
- hole diameter single-lever mixer 57 mm
- rosette for spout Ø 60mm
- rosette for mixer Ø 78mm
- max. flow 5.7 l/min
- lead-free
- This product can help a building meet the requirements of Green Building Rating Systems, e.g. LEED®, BREEAM®, DGNB
- WRAS

	Dark Chrome	36 861 660-19
	Chrome	36 861 660-00
	Brushed Platinum	36 861 660-06
	Light Gold	36 861 660-26
	Brushed Light Gold	36 861 660-27
	Matte Black	36 861 660-33
	Brushed Bronze	36 861 660-42
	Brushed Champagne (22kt Gold)	36 861 660-46
	Champagne (22kt Gold)	36 861 660-47
	Brushed Chrome	36 861 660-93
	Brushed Dark Platinum	36 861 660-99

Required miscellaneous



Concealed wall-mounted single-lever mixer mixer on right - 35 816 970 90

- NOTE: Not suitable for concealed installation. Connection by means of angle valves, mounted with screws to back wall.

Required miscellaneous



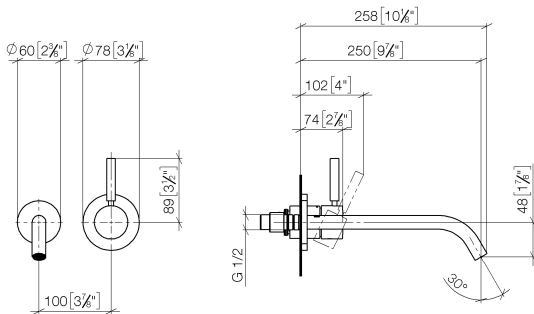
Concealed wall-mounted single-lever mixer - 35 860 970 90

- max. recess depth 95 mm
- min. recess depth 80 mm
- mixer can be placed above, to the left or to the right of the spout.

META Wall-mounted single-lever basin mixer without pop-up waste - Dark Chrome

META

36 861 660
mm [inches]



Flow rate chart



Trajectory diagram



Codes & Standards

EN 817

Scottish Water
Byelaws

UK Water Supply
Regulations



META Wall-mounted single-lever basin mixer without pop-up waste - Dark Chrome

META

36 861 660

Certificates and sustainability

DVGW_DW-
6512DN0

WRAS_2107

META Wall-mounted single-lever basin mixer without pop-up waste - Dark
Chrome

META

36 861 660

