




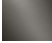
META META SLIM Wall-mounted single-lever basin mixer without pop-up waste - Brushed Platinum

META

36 861 662 Product version up to 9/1/2021



- 250mm projection
- fixed spout
- circular, air-enriched flow
- hole diameter spout 37 mm
- hole diameter single-lever mixer 57 mm
- rosette for spout Ø 55mm
- rosette for mixer Ø 78mm
- max. flow 5.7 l/min
- lead-free
- This product can help a building meet the requirements of Green Building Rating Systems, e.g. LEED®, BREEAM®, DGNB

	Brushed Platinum	36 861 662-06
	Chrome	36 861 662-00
	Dark Chrome	36 861 662-19
	Light Gold	36 861 662-26
	Brushed Light Gold	36 861 662-27
	Matte Black	36 861 662-33
	Brushed Dark Brass	36 861 662-39
	Brushed Bronze	36 861 662-42
	Brushed Champagne (22kt Gold)	36 861 662-46
	Champagne (22kt Gold)	36 861 662-47
	Brushed Chrome	36 861 662-93
	Brushed Dark Platinum	36 861 662-99

Required miscellaneous



Concealed wall-mounted single-lever mixer - 35 860 970 90

- max. recess depth 95 mm
- min. recess depth 80 mm
- mixer can be placed above, to the left or to the right of the spout.

Required miscellaneous



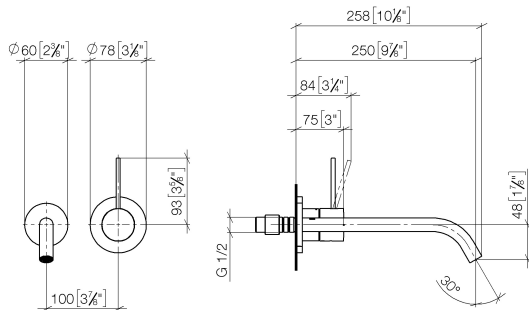
Concealed wall-mounted single-lever mixer mixer on right - 35 816 970 90

- NOTE: Not suitable for concealed installation. Connection by means of angle valves, mounted with screws to back wall.

META META SLIM Wall-mounted single-lever basin mixer without pop-up waste - Brushed Platinum

META

36 861 662 Product version up to 9/1/2021
mm [inches]



Flow rate chart



Trajectory diagram



Codes & Standards

DIN 4109

EN 817

ISO 3822

Ü-Zeichen



META META SLIM Wall-mounted single-lever basin mixer without pop-up waste - Brushed Platinum

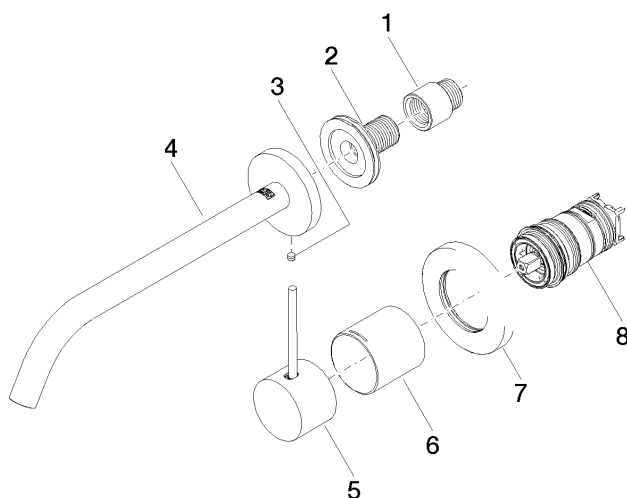
META

36 861 662 Product version up to 9/1/2021

Certificates and sustainability

DVGW_DW-
6512DN0

LGA_29



Spare parts list

No.	Item Number	Name	Quantity used	Delivery time
1	09 24 03 072 10 90	nipple	1.00	2
7	90 27 62 011 00-06	rosette	1.00	10
4	90 28 22 324 00-06	spout	1.00	10
8	90 15 05 044 02 90	cartridge	1.00	2
5	90 20 66 022 00-06	handle	1.00	10
3	09 31 11 112 90	pin	1.00	60
2	90 24 03 280 00 90	nipple	1.00	2
6	09 11 02 336-06	sleeve	1.00	10