

MEM Wall-mounted single-lever basin mixer with cover plate without pop-up waste - Champagne (22kt Gold)

MEM

36 864 782



- 207mm projection
- fixed spout
- rectangular, air-enriched flow
- hole diameter spout 37 mm
- hole diameter single-lever mixer 57 mm
- cover plate 80 x 180 mm
- max. flow 5.7 l/min
- lead-free
- This product can help a building meet the requirements of Green Building Rating Systems, e.g. LEED®, BREEAM®, DGNB
- WRAS

	Champagne (22kt Gold)	36 864 782-47
	Chrome	36 864 782-00
	Brushed Platinum	36 864 782-06
	Platinum	36 864 782-08
	Dark Chrome	36 864 782-19
	Brushed Durabronze (23kt Gold)	36 864 782-28
	Brushed Champagne (22kt Gold)	36 864 782-46
	Brushed Dark Platinum	36 864 782-99

Required miscellaneous



Concealed wall-mounted single-lever mixer on right -

35 816 970 90

- NOTE: Not suitable for concealed installation. Connection by means of angle valves, mounted with screws to back wall.

Required miscellaneous



Concealed wall-mounted single-lever mixer -

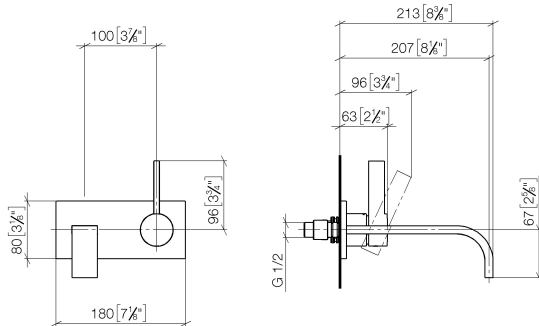
35 860 970 90

- max. recess depth 95 mm
- min. recess depth 80 mm
- mixer can be placed above, to the left or to the right of the spout.

MEM Wall-mounted single-lever basin mixer with cover plate without pop-up waste - Champagne (22kt Gold)

MEM

36 864 782
mm [inches]



Flow rate chart



Codes & Standards

DIN 4109

EN 817

ISO 3822

Scottish Water
Byelaws

UK Water Supply
Regulations

Ü-Zeichen



MEM Wall-mounted single-lever basin mixer with cover plate without pop-up waste - Champagne (22kt Gold)

MEM

36 864 782

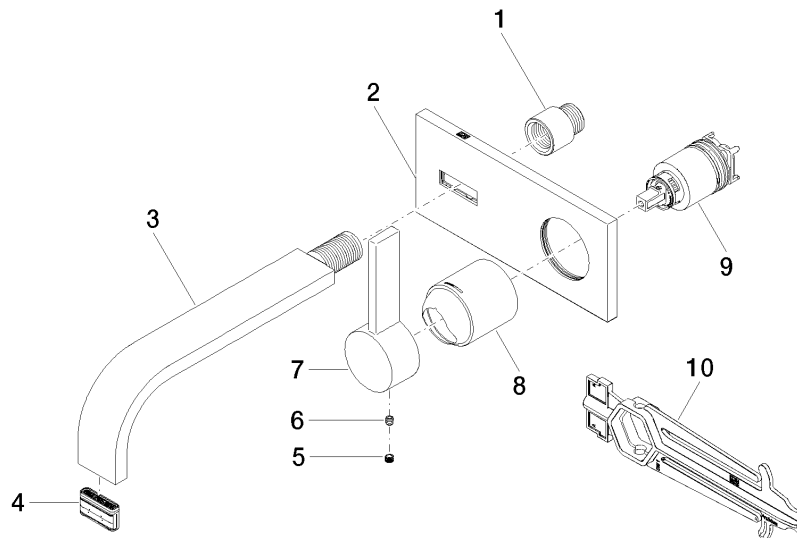
Certificates and sustainability

LGA_29	DVGW_DW-6512DN0	WRAS_2107
--------	-----------------	-----------

MEM Wall-mounted single-lever basin mixer with cover plate without pop-up waste - Champagne (22kt Gold)

MEM

36 864 782



Spare parts list

No.	Item Number	Name	Quantity used	Delivery time
8	09 11 02 288-47	cover	1.00	30
3	04 28 22 149 10-47	spout	1.00	30
9	90 15 05 064 01 90	cartridge	1.00	2
2	90 11 01 186 00-47	plate	1.00	30
7	09 20 78 058-47	handle	1.00	60
4	90 29 03 109 00 90	aerator	1.00	2
1	09 24 03 072 10 90	nipple	1.00	2
10	90 30 09 064 00 90	key	1.00	2
6	90 31 11 030 00 90	pin	1.00	2
5	90 31 20 109 00 90	plug	1.00	2