

41 610 979



- exposed trim parts
- Rain panel with 2 different spray modes
- AQUACIRCLE RAIN: Circular rain curtain, max. flow rate 6.8 l/min (at 3 bar)
- TEMPEST RAIN: Natural rain, max. flow rate 5 l/min (at 3 bar)
- Matt white cover, RAL 9003
- Outer diameter 1240 mm, opening diameter 450 mm
- with anti-scale system
- Weight 22.5 kg
- Control elements not included among the items supplied

**Ambient lighting**

- LED colour temperature approx. 2700 K
- Bulbs protected against splashing water
- Technology: LED, not dimmable
- Provided by customer: Light switch

**Environment**

- Not suitable for use in a steam room.
- Not suitable for outdoor use.
- Not suitable for use in chlorinated or salty environments.
- Comply with the protection zone regulations as defined in DIN VDE 0100, Part 701 (IEC 60364-7-701).

**Rain panel cover for adaptation to ceiling colour available in all RAL colours, price and delivery time on request**

**Pre-assembly kit for three-way diverter included**

Rain panel cover for adaptation to ceiling colour available in all RAL colours, price and delivery time on request

Pre-assembly kit for three-way diverter included

**Required miscellaneous**

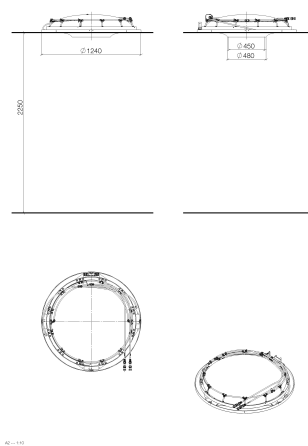


**RAINMOON Concealed ceiling installation box -**

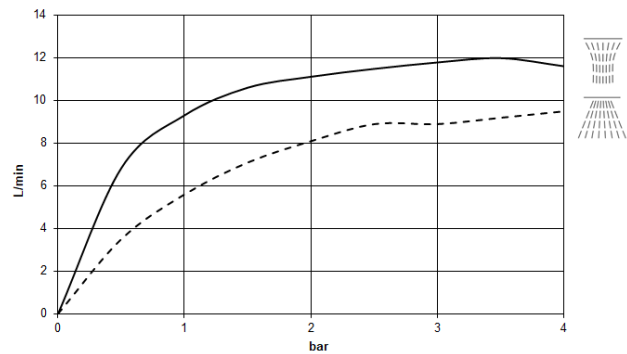
35 610 970 90

- Ceiling installation enclosure 1356 x 1356 x 290 mm
- concealed rough parts
- Opening diameter 1252 mm
- min. recess depth 290 mm
- Pre-assembly kit for three-way diverter included

41 610 979



### Flow rate chart



### Codes & Standards

DIN 4109

ISO 3822

Ü-Zeichen



## RAINMOON Rain panel - Matte White

---

SERIES-VARIOUS

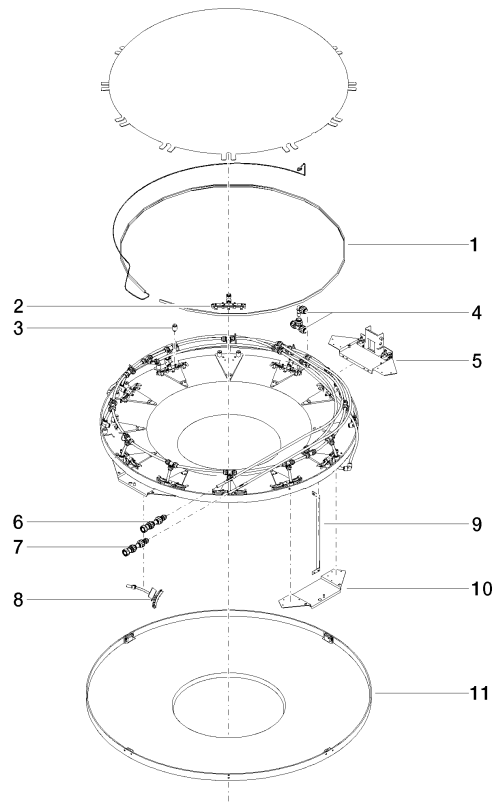
41 610 979

Certificates and sustainability

---

LGA\_29

41 610 979



## Spare parts list

No.	Item Number	Name	Quantity used	Delivery time
1	90 10 01 183 00 90	lamp	1.00	2
9	90 17 20 217 00 90	holder	4.00	2
6	90 24 04 346 01 90	connection AQUACIRCLE	1.00	2
2	90 17 09 056 01 90	jet module	12.00	60
11	90 11 02 325 00 90	cover	1.00	2
4	90 24 04 321 00 90	threaded connector	1.00	2
3	90 18 40 222 00 90	adaptor	24.00	2
5	90 17 20 211 00 90	joint	1.00	2
8	90 17 09 057 01 90	jet module	12.00	2
7	90 24 04 346 02 90	connection TEMPEST	1.00	2
10	90 17 20 216 00 90	holder	3.00	2