

META Washstand fitting with electronic opening and closing function without pop-up waste - Brushed Dark Brass

META

44 515 660 Product version from 7/1/2023



- Infrared sensor technology
- 125mm projection
- height of mixer 140 mm
- height up to aerator 52 mm
- hole diameter 35 mm
- fixed spout
- max. flow 5.7 l/min
- circular, air-enriched flow
- suitable for thermal disinfection
- Automatic shut-off after pre-set time is reached
- Direct temperature control at faucet
- Battery-powered (batteries not included)
- 1x CR-P2 battery required
- lead-free
- 2x screw-in M 8 x 1 pressure hose, leak-tested
- This product can help a building meet the requirements of Green Building Rating Systems, e.g. LEED®, BREEAM®, DGNB
- WRAS

Batteries not included

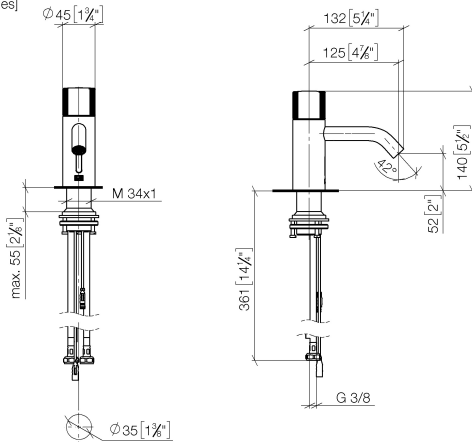
| | | |
|---|-------------------------------|---------------|
|  | Brushed Dark Brass | 44 515 660-39 |
|  | Chrome | 44 515 660-00 |
|  | Brushed Platinum | 44 515 660-06 |
|  | Platinum | 44 515 660-08 |
|  | Dark Chrome | 44 515 660-19 |
|  | Light Gold | 44 515 660-26 |
|  | Brushed Light Gold | 44 515 660-27 |
|  | Matte Black | 44 515 660-33 |
|  | Brushed Bronze | 44 515 660-42 |
|  | Brushed Champagne (22kt Gold) | 44 515 660-46 |
|  | Champagne (22kt Gold) | 44 515 660-47 |
|  | Brushed Chrome | 44 515 660-93 |
|  | Brushed Dark Platinum | 44 515 660-99 |

META Washstand fitting with electronic opening and closing function without pop-up waste - Brushed Dark Brass

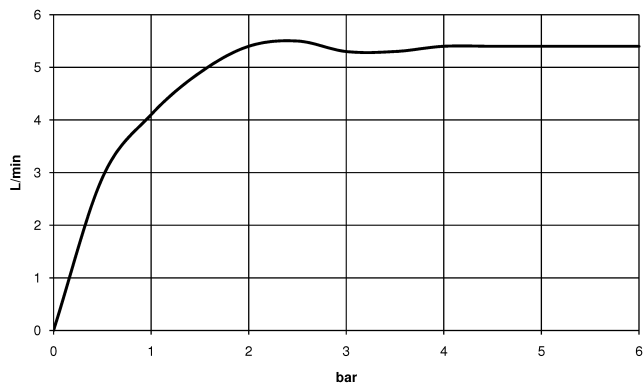
META

44 515 660 Product version from 7/1/2023

mm [inches]



Flow rate chart



Codes & Standards

Scottish Water
Byelaws

UK Water Supply
Regulations



META Washstand fitting with electronic opening and closing function without pop-up waste - Brushed Dark Brass

META

44 515 660 Product version from 7/1/2023

Certificates and sustainability

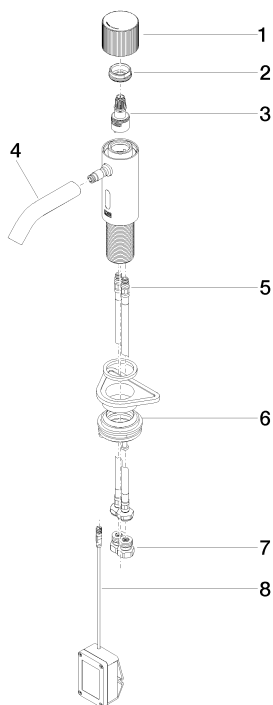
WRAS_2212

META Washstand fitting with electronic opening and closing function without pop-up waste - Brushed Dark Brass

META

44 515 660 Product version from 7/1/2023

Parts for other finishes can be found here: [Chrome](#)



Spare parts list

| No. | Item Number | Name | Quantity used | Delivery time |
|-----|--------------------|-----------------------|---------------|---------------|
| 8 | 90 10 01 250 00 90 | casingwithout battery | 1.00 | 2 |
| 5 | 04 30 04 100 00 90 | hose | 2.00 | 2 |
| 6 | 04 23 10 044 08 90 | fixing set | 1.00 | 2 |
| 7 | 90 24 03 314 00 90 | nipple set | 2.00 | 2 |
| 4 | 90 11 06 206 00-39 | spout | 1.00 | 30 |
| 3 | 90 90 03 173 00 90 | top | 1.00 | 2 |
| 1 | 90 20 66 124 00-39 | handle | 1.00 | 30 |
| 2 | 09 24 04 562 90 | nut | 1.00 | 60 |