

Towel warmer , 6-fold , projection right , without control element - Dark Chrome

SERIES SPECIFIC

83 316 980

Product version from 4/1/2025



- gauge 120 mm
  - width 600mm
  - height 660 mm
  - rosette 60 x 60 mm
  - 63mm projection
  - Degree of protection IP 44, CE marking
  - Output per towel bar: 15 watts
  - Rated voltage: 220 - 240 V AC

**Without control element**







**Activation must be handled by the customer**

**Note: Different conditioning.**

Without control element

Activation must be handled by the customer

Note: Different conditioning.

|   |                               |               |
|---|-------------------------------|---------------|
|  | Dark Chrome                   | 83 316 980-19 |
|  | Chrome                        | 83 316 980-00 |
|  | Matte Black                   | 83 316 980-33 |
|  | Brushed Champagne (22kt Gold) | 83 316 980-46 |
|  | Brushed Chrome                | 83 316 980-93 |
|  | Brushed Dark Platinum         | 83 316 980-99 |

Required miscellaneous



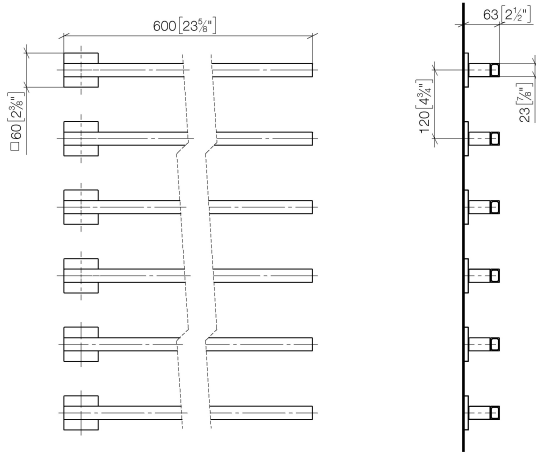
- Concealed wall installation box for 35 313 970 90 towel warmer , 6-fold , without control element -**

  - min. recess depth 70 mm
  - max. recess depth 105 mm

## Towel warmer , 6-fold , projection right , without control element - Dark Chrome SERIES SPECIFIC

83 316 980 Product version from 4/1/2025

mm [inches]



Towel warmer , 6-fold , projection right , without control element - Dark Chrome
SERIES SPECIFIC

83 316 980
Product version from 4/1/2025



Spare parts list

| No. | Item Number        | Name       | Quantity used | Delivery time |
|-----|--------------------|------------|---------------|---------------|
| 1   | 90 17 98 562 00-19 | holder     | 1.00          | 20            |
| 2   | 90 30 30 252 00 90 | fixing set | 1.00          | 30            |