

TARA Pillar tap cold water - Brushed Chrome

TARA

17 500 892 Product version from 6/30/2009



- 100mm projection
- fixed spout
- circular, air-enriched flow
- height of mixer 115 mm
- height up to aerator 40 mm
- hole diameter 35 mm
- 1/2" connection
- rosette Ø 45 mm
- max. flow 7 l/min
- lead-free
- This product can help a building meet the requirements of Green Building Rating Systems, e.g. LEED®, BREEAM®, DGNB

	Brushed Chrome	17 500 892-93
	Chrome	17 500 892-00
	Brushed Platinum	17 500 892-06
	Platinum	17 500 892-08
	Dark Chrome	17 500 892-19
	Brushed Durabronze (23kt Gold)	17 500 892-28
	Matte Black	17 500 892-33
	Brushed Dark Brass	17 500 892-39
	Brushed Bronze	17 500 892-42
	Brushed Champagne (22kt Gold)	17 500 892-46
	Champagne (22kt Gold)	17 500 892-47
	Brushed Dark Platinum	17 500 892-99

17 500 892 Product version from 6/30/2009

mm [inches]



Flow rate chart



Codes & Standards

DIN 4109

ISO 3822

Ü-Zeichen



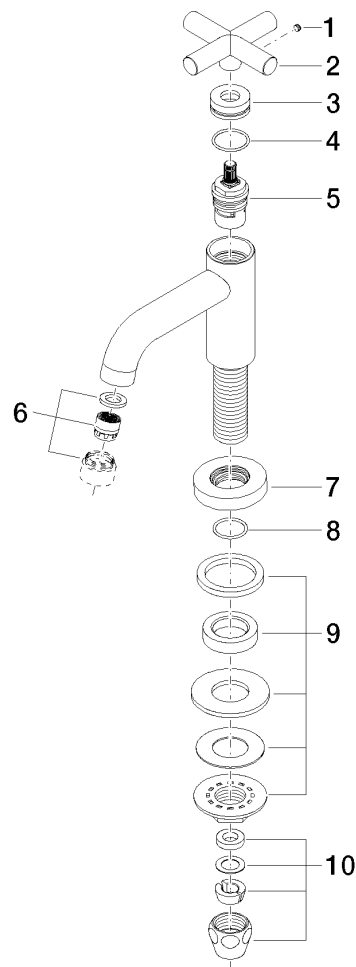
TARA Pillar tap cold water - Brushed Chrome

TARA

17 500 892 Product version from 6/30/2009

Certificates and sustainability

LGA_18



Spare parts list

No.	Item Number	Name	Quantity used	Delivery time
	2 09 20 89 011-93	handle	1.00	20
	3 09 21 02 089-93	sleeve	1.00	20
	5 90 90 03 135 00 90	top	1.00	2
	7 09 27 89 106-93	rosette	1.00	20
	6 90 23 01 068 01-93	aerator	1.00	20
	1 09 31 11 055 90	pin	1.00	2
	9 04 23 10 010 88 90	fixing set	1.00	2
	4 09 14 10 085 90	seal	1.00	2
	10 90 23 30 040 00-93	threaded connector	1.00	20
	8 90 14 10 032 00 90	seal	1.00	2