







## CL.1 Deck-mounted basin spout without pop-up waste - Brushed Platinum

CL.1

13 714 705 Product version from 7/1/2021 to 6/15/2021

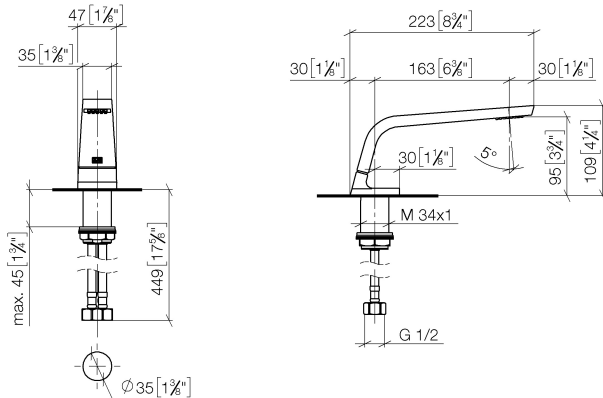


- 160mm projection
- fixed spout
- rectangular spray pattern with 40 individual jets
- height of mixer 108 mm
- height up to aerator 94 mm
- hole diameter 35 mm
- 2x screw-in M 10 x 1 pressure hose, leak-tested
- 1/2" connection
- max. flow 4 l/min
- lead-free
- This product can help a building meet the requirements of Green Building Rating Systems, e.g. LEED®, BREEAM®, DGNB
- WRAS

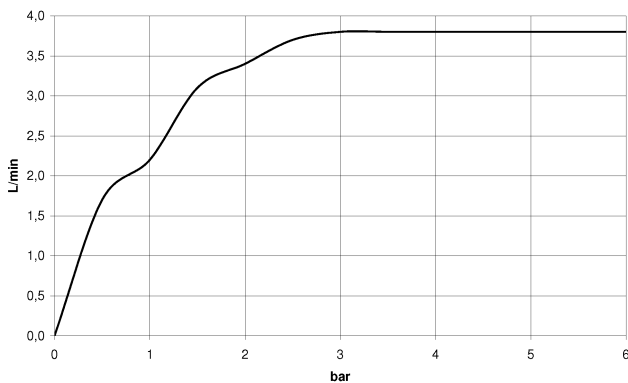
	Brushed Platinum	13 714 705-06
	Chrome	13 714 705-00
	Dark Chrome	13 714 705-19
	Brushed Champagne (22kt Gold)	13 714 705-46
	Champagne (22kt Gold)	13 714 705-47
	Brushed Dark Platinum	13 714 705-99

13 714 705 Product version from 7/1/2021 to 6/15/2021

mm [inches]



**Flow rate chart**



**Codes & Standards**

ASME A112.18.1      cUPC      DIN 4109      EPA WaterSense

Executive Order no. 1007      ISO 3822      NSF372      NSF61

Scottish Water Byelaws      UK Water Supply Regulations      Ü-Zeichen      WaterSense





CL.1 Deck-mounted basin spout without pop-up waste - Brushed Platinum

CL.1

13 714 705    Product version from 7/1/2021 to 6/15/2021

Certificates and sustainability

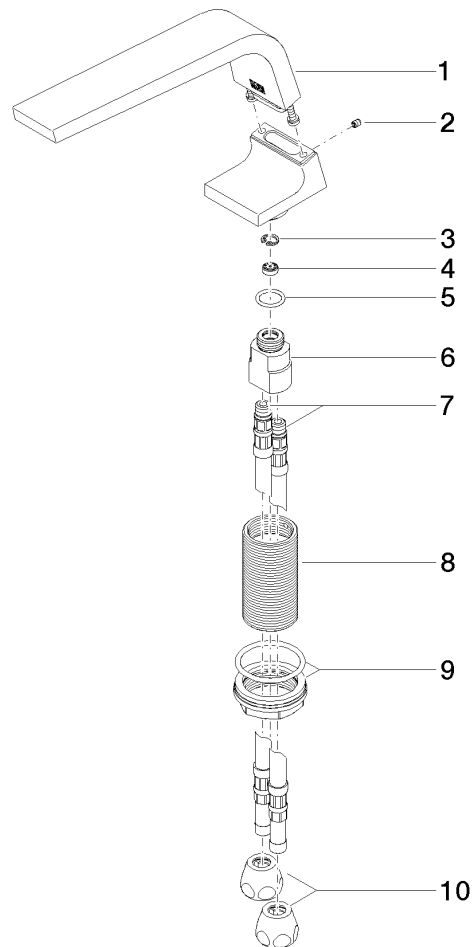
GDV_0400	LGA_28	IAPMO_N-4	IAPMO_4976	IAPMO_8834
WRAS_1512	IAPMO_6			

## CL.1 Deck-mounted basin spout without pop-up waste - Brushed Platinum

CL.1

13 714 705 Product version from 7/1/2021 to 6/15/2021

Parts for other  
finishes can be found  
here: [Chrome](#)



### Spare parts list

No.	Item Number	Name	Quantity used	Delivery time
	6 09 11 10 055 10 90	connection	1.00	2
	9 04 23 10 044 06 90	fixing set	1.00	2
	5 09 14 10 130 90	seal	1.00	2
	4 09 23 01 034 90	flow reducer	1.00	2
	3 09 16 01 016 90	ring	1.00	2
	2 09 31 11 044 90	pin	1.00	2
	7 04 30 04 016 00 90	hose	2.00	60
	8 09 30 01 208 90	connection	1.00	2
	1 90 11 70 002 00-06	spout	1.00	10
10	90 23 30 040 00-06	threaded connector	2.00	10