

LISSÉ Bath spout for wall mounting - Brushed Platinum








LISSÉ

13 801 845

Product version from 3/9/2016



- 210mm projection
- circular normal flow
- hole diameter 37 mm
- 1/2" connection
- plug-link mounting
- max. flow 21.5 l/min at 3 bar flow pressure
- WRAS

	Brushed Platinum	13 801 845-06
	Chrome	13 801 845-00
	Dark Chrome	13 801 845-19
	Brushed Light Gold	13 801 845-27
	Matte Black	13 801 845-33
	Brushed Chrome	13 801 845-93
	Brushed Dark Platinum	13 801 845-99

Recommended miscellaneous



- Concealed wall elbow -

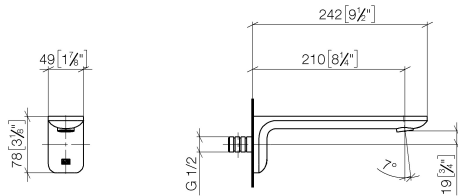
•max. recess depth 163 mm

•min. recess depth 90 mm

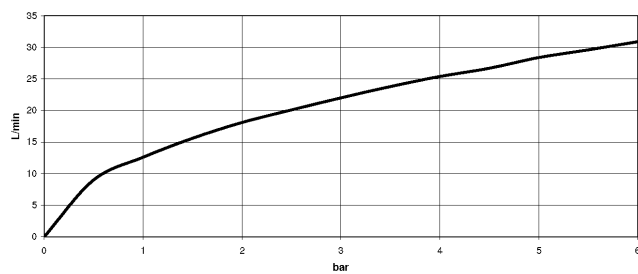
35 085 970 90

13 801 845 Product version from 3/9/2016

mm [inches]



### Flow rate chart



### Codes & Standards

ASME A112.18.1 cUPC DIN 4109 ISO 3822

Scottish Water Byelaws UK Water Supply Regulations Ü-Zeichen



## LISSE Bath spout for wall mounting - Brushed Platinum

---

LISSE

13 801 845 Product version from 3/9/2016

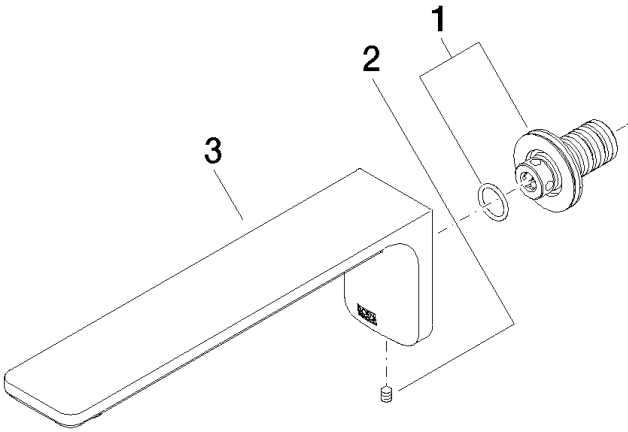
### Certificates and sustainability

---

IAPMO\_4976

LGA\_29

WRAS\_2207



Spare parts list

No.	Item Number	Name	Quantity used	Delivery time
3	90 11 84 014 02-06	spout	1.00	10
1	90 24 03 108 00 90	nipple set	1.00	2
2	90 31 11 004 00 90	pin	1.00	2