







## CL.1 Bath spout without diverter for deck mounting - Chrome

CL.1

13 612 705 Product version from 3/9/2015 to 5/27/2021



- 200mm projection
- rectangular spray pattern with 55 individual jets
- height of mixer 125 mm
- height up to aerator 108 mm
- hole diameter 35 mm
- 1/2" connection
- max. flow 24.6 l/min at 3 bar flow pressure
- WRAS

	Chrome	13 612 705-00
	Brushed Platinum	13 612 705-06
	Dark Chrome	13 612 705-19
	Brushed Champagne (22kt Gold)	13 612 705-46
	Champagne (22kt Gold)	13 612 705-47
	Brushed Dark Platinum	13 612 705-99

### Required miscellaneous



**Hose set -**

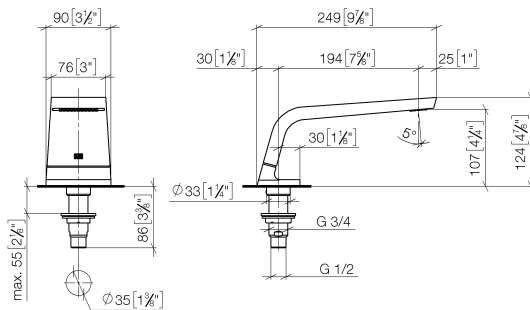
12 509 970-90  
0010

## CL.1 Bath spout without diverter for deck mounting - Chrome

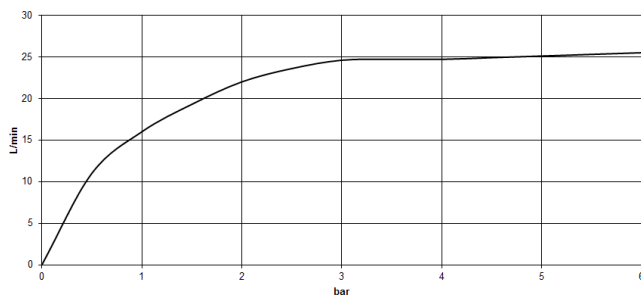
CL.1

13 612 705 Product version from 3/9/2015 to 5/27/2021

mm [inches]



### Flow rate chart



### Codes & Standards

ASME A112.18.1      cUPC      DIN 4109      ISO 3822

Scottish Water Byelaws      UK Water Supply Regulations      Ü-Zeichen



## CL.1 Bath spout without diverter for deck mounting - Chrome

---

CL.1

13 612 705 Product version from 3/9/2015 to 5/27/2021

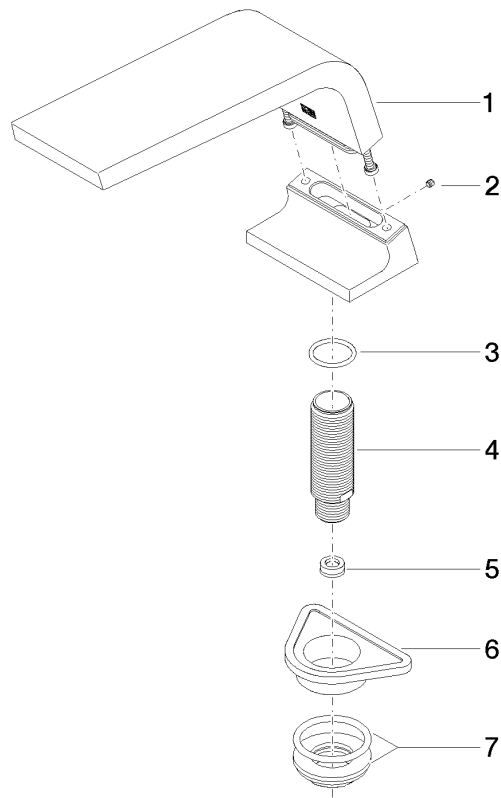
### Certificates and sustainability

---

WRAS\_1512

LGA\_28

IAPMO\_4976



## Spare parts list

No.	Item Number	Name	Quantity used	Delivery time
	4 09 30 01 117 90	connection	1.00	2
	7 04 23 10 004 03 90	fixing set	1.00	2
	3 09 14 10 009 90	seal	1.00	2
	1 90 11 70 007 00-00	spout	1.00	10
	2 09 31 11 099 90	pin	1.00	2
	6 09 18 40 090 90	sleeve	1.00	2
	5 09 23 01 057 90	flow reducer	1.00	2