

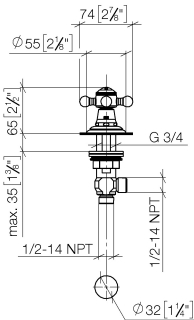
20 000 360



- hole diameter 32 mm
- rosette Ø 55 mm
- supplied with porcelain inserts for both HOT and COLD
- WRAS 1810004

20 000 360

mm [inches]



Flow rate chart



Codes & Standards

ADA



MADISON Deck valve clockwise closing cold or hot - Platinum

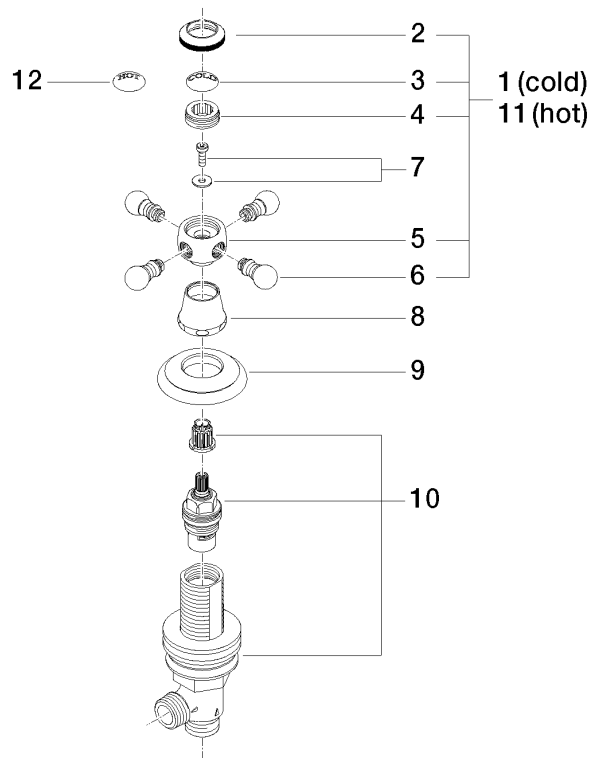
MADISON

20 000 360

Certificates

WRAS_1810004.

20 000 360



Spare parts list

No.	Item Number	Name	Quantity used	Delivery time
1	04 20 36 002 06-08	handle (cold)	1	40
2	09 20 36 005-08	handle	1	40
3	09 26 01 010 90	accessories	1	2
4	09 20 83 006 90	handle	1	2
5	09 20 36 002-08	handle	1	40
6	09 20 36 004-08	handle	4	40
7	04 30 30 029 00 90	fixing set	1	2
8	09 21 02 046-08	cover	1	40
9	09 27 35 001-08	rosette	1	40
10	90 17 11 040 31 90	side panel	1	2
11	04 20 36 002 07-08	handle (hot)	1	40
12	09 26 01 011 90	accessories	1	2